



# Design Kick-off | Community Meeting

SCPS High School #6

December 15, 2021 | Stafford, VA



**Stafford County Public Schools**

Inspire. Empower. Excel.



# Agenda

Welcome + Introductions

Background

Project Overview

Vision + Guiding Principles

Next Generation High School

What Will Make This School A Success?

Next Steps – January Community Meeting

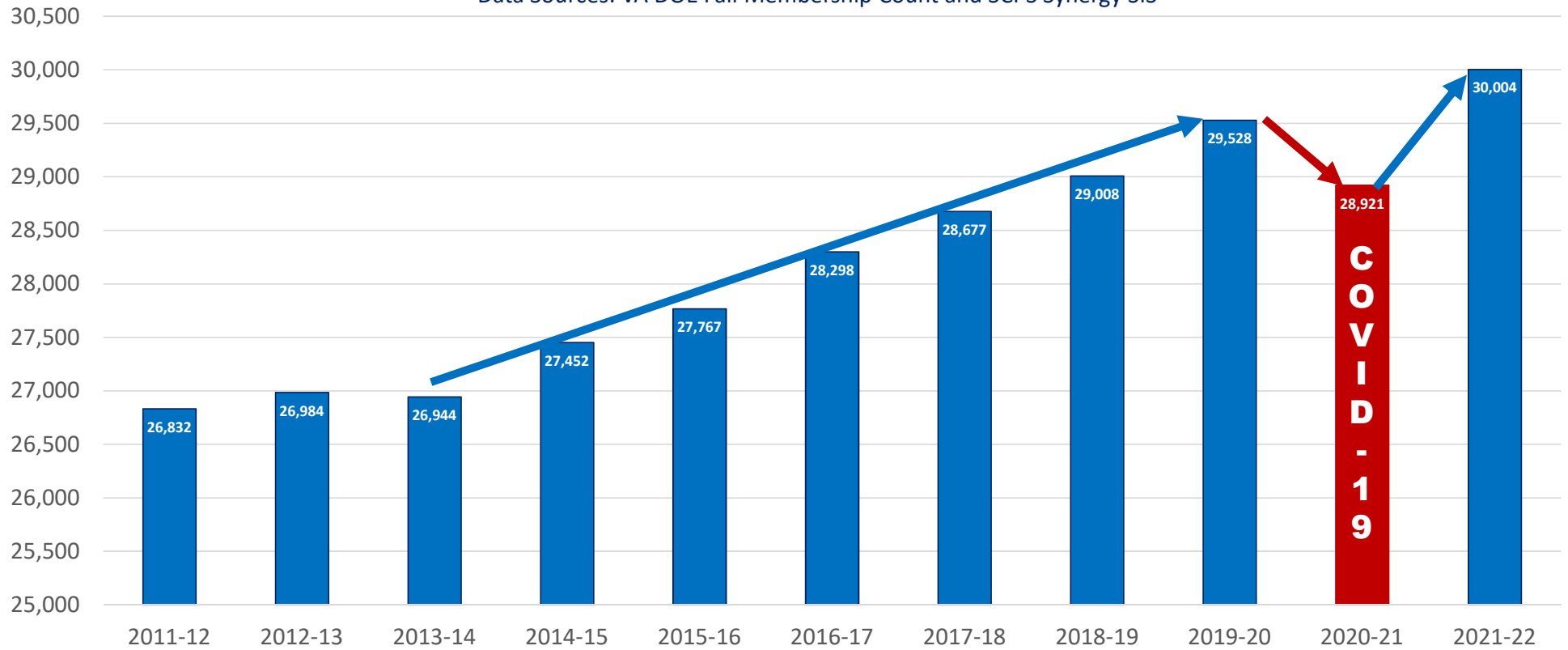


## Background on HS#6

- Planning process for HS#6 began in Fall 2019 when high school enrollment exceeded 90% of aggregate design capacity
- HS#6 slated to open August 2025 and will provide up to 2,150 seats to relieve projected crowding
- School Board voted and approved the SW quadrant of the County as the general location of the school
- HS#6 project approved for funding in the Stafford County FY2022-31 Capital Improvement Plan
- School Board and County approved guidance (SW quadrant, urban service area, 70+/- acres, etc.) to evaluate potential high school sites and narrow down site options

# Historical K-12 Student Enrollment Last Ten School Years

Data Sources: VA DOE Fall Membership Count and SCPS Synergy SIS





# ENROLLMENT CHANGE

School Level	Enrollment 9/30/19	Enrollment 9/30/2020	Enrollment 9/30/2021	Enrollment Difference Year over Year
Elementary	12,665	11,947	12,667	+720
Middle	7,186	7,130	7,190	+60
High	9,725	9,924	10,140	+216
Division (K-12)	29,576	29,001	30,004	1,003

Data Source: September 30<sup>th</sup> enrollment as reported in SCPS Synergy Student Information System.

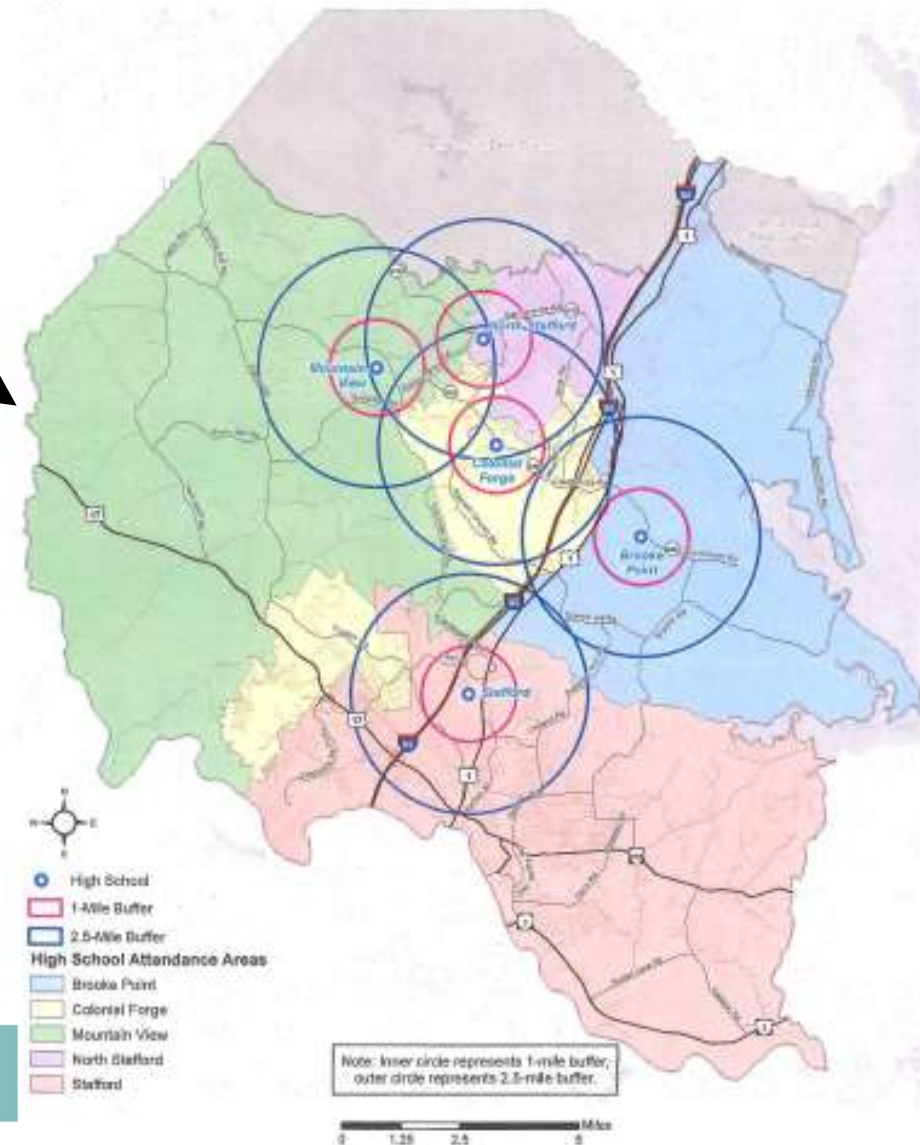
Note:

SCPS projections suggest that high schools will add 750+ students in five years and 1,850+ students over the next decade. 5

# Southwest Quadrant

- Currently, there are no high schools located in the southwest section of the county
- Southwest location will help alleviate long bus rides for some high school students
- Operational efficiencies will be gained from shorter bus rides to/from school

## 2.5 Mile Radius of Existing Schools



# We Are Here To Listen to You



**Melanie Hennigan**  
**AIA, LEED AP, NCARB**  
President & CEO



**Paul Klee**  
**AIA, LEED AP, NCARB**  
Partner-In-Charge



**Scott Eschbach**  
**AIA, LEED AP, CPD**  
Project Manager



**Kathleen O'Hearn**  
**AIA, LEED AP BD+C**  
Project Architect



**David Wolf**  
**LEED AP**  
Senior Associate



**Alex Struble**  
**NCIDQ, IIDA**  
Associate, Interior Designer



**Stafford County Public Schools**  
Inspire. Empower. Excel.



# About Us: Grimm + Parker

- Regional + Local Expertise
- 95+ professional staff / 44 LEED AP
- 49+ years of community architecture
- Experts in High School Design and Educational Facilities
- WBENC – Women Owned Business
- Over 230 Awards

**50+**  
High Schools

**230<sup>+</sup>** Awards  
national, state and local

**3<sup>X</sup>** Architecture  
Firm of the  
Year

Voted by WBJ one of the

**2020** “Best Places  
to Work”

designing spaces | shaping lives | transforming communities



# 49+ Years of High School Design Experience

Our first public school client from 1972 is still an active client today.

50+

High Schools

## Comprehensive High Schools:

Allegany H.S.  
Bel Air H.S.  
Bishop McNamara H.S.  
Charles H. Flowers H.S.  
Connolly School of the Holy Child  
**Colonial Forge H.S.**  
Damascus H.S.  
Dover H.S.  
Dr. Henry Wise Jr. H.S.  
Forestville High School  
Havre de Grace M.S. and H.S.  
John Champe High School  
Judge Taylor Innovative Academy  
Linganore H.S.  
Loyola Blakefield H.S.  
Mountain Ridge H.S.  
New Town H.S.  
Norwood High School  
Oakdale H.S.  
Queen Anne Episcopal High School  
Quince Orchard H.S.  
S. Carroll H.S.  
Suitland H.S.  
Thomas Jefferson H.S.  
Tuscarora H.S.  
Walt Whitman H.S.  
Washington Christian K-12  
Westmoreland High School  
Woodrow Wilson H.S. F.S.

## Career + Technical Ed. High Schools:

Harrisonburg H.S. 2  
Louisa County H.S.  
Manchester Valley H.S.  
**Mountain View H.S.**  
North Harford Career + Technology  
Parkside Career + Technology H.S.  
Queen Anne's Career + Technology  
**Stafford H.S.**  
Thomas Edison H.S.

## PLTW + STEM Academies:

Aberdeen H.S.  
Albert Einstein H.S.  
Bel Air H.S.  
Carver Arts + Technology H.S.  
Edgewood H.S.  
Fairmont Heights H.S.  
Flowers H.S.  
Kent Island H.S.  
Linganore H.S.  
River Hill H.S.  
Washington-Liberty H.S.  
Wheaton High School  
Woodward High School  
Yorktown H.S.

# We have 25 years of experience listening to SCPS

We have experience listening to Stafford parents, students, administrators, and community members.

We have successfully designed 3 high schools and 1 elementary school for you, all with strict budgets.



**Colonial Forge HS**



**Mountain View HS**



**Stafford HS**



**Moncure ES**



# Step Into the Future... To Be Continued Later

## What Do *You* Envision?

Imagine this successful program 10 years from now.

What will make this school a success for...

-  Parent/Guardian
-  Student
-  Community Member
-  Educational Staff Member

- Potential Estimated Size = 294,000 gsf
- Total Capacity = Up To 2,150 students
- Grades = 9-12
- Energy Efficient and Practical Design
- Comprehensive High School with Various CTE Career Academies

## Project Overview





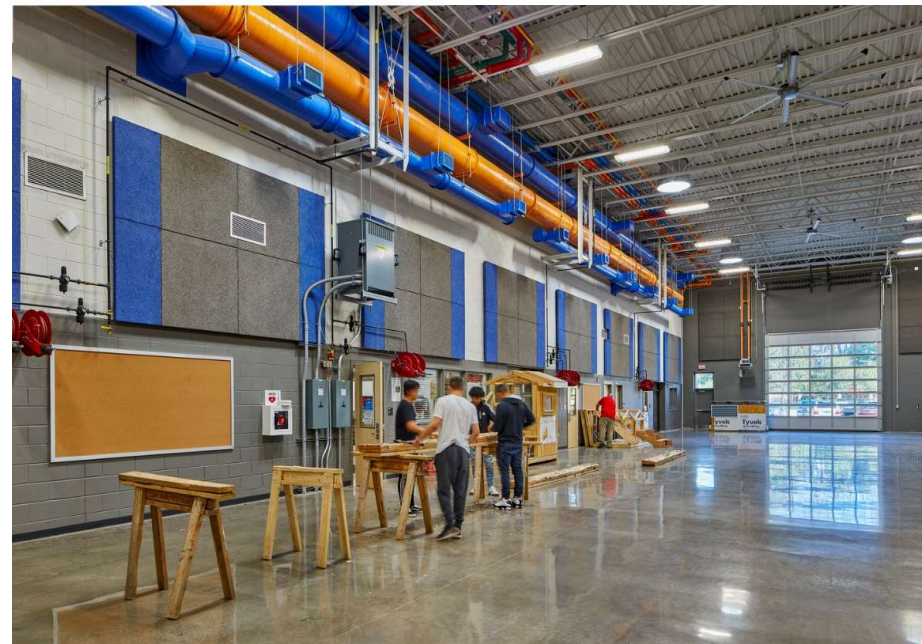
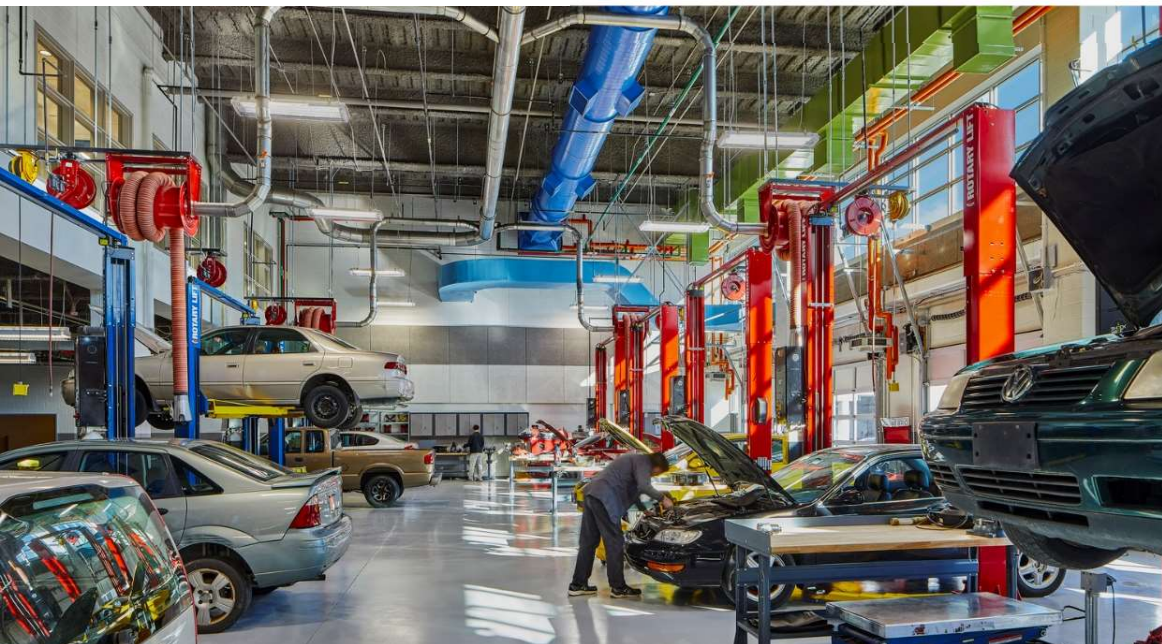
# Westmoreland High School

Recent Projects



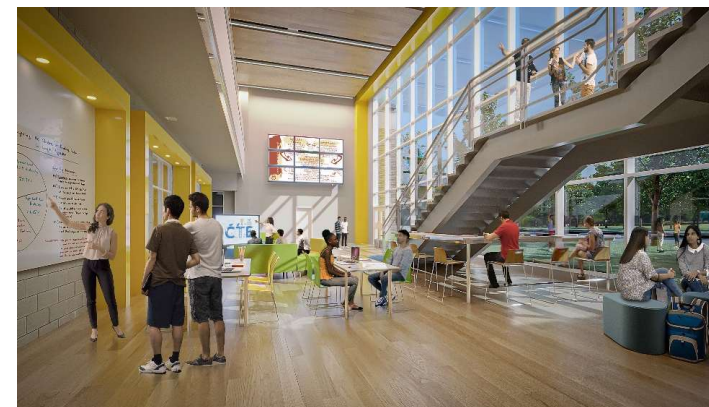


# Thomas Edison High School of Technology



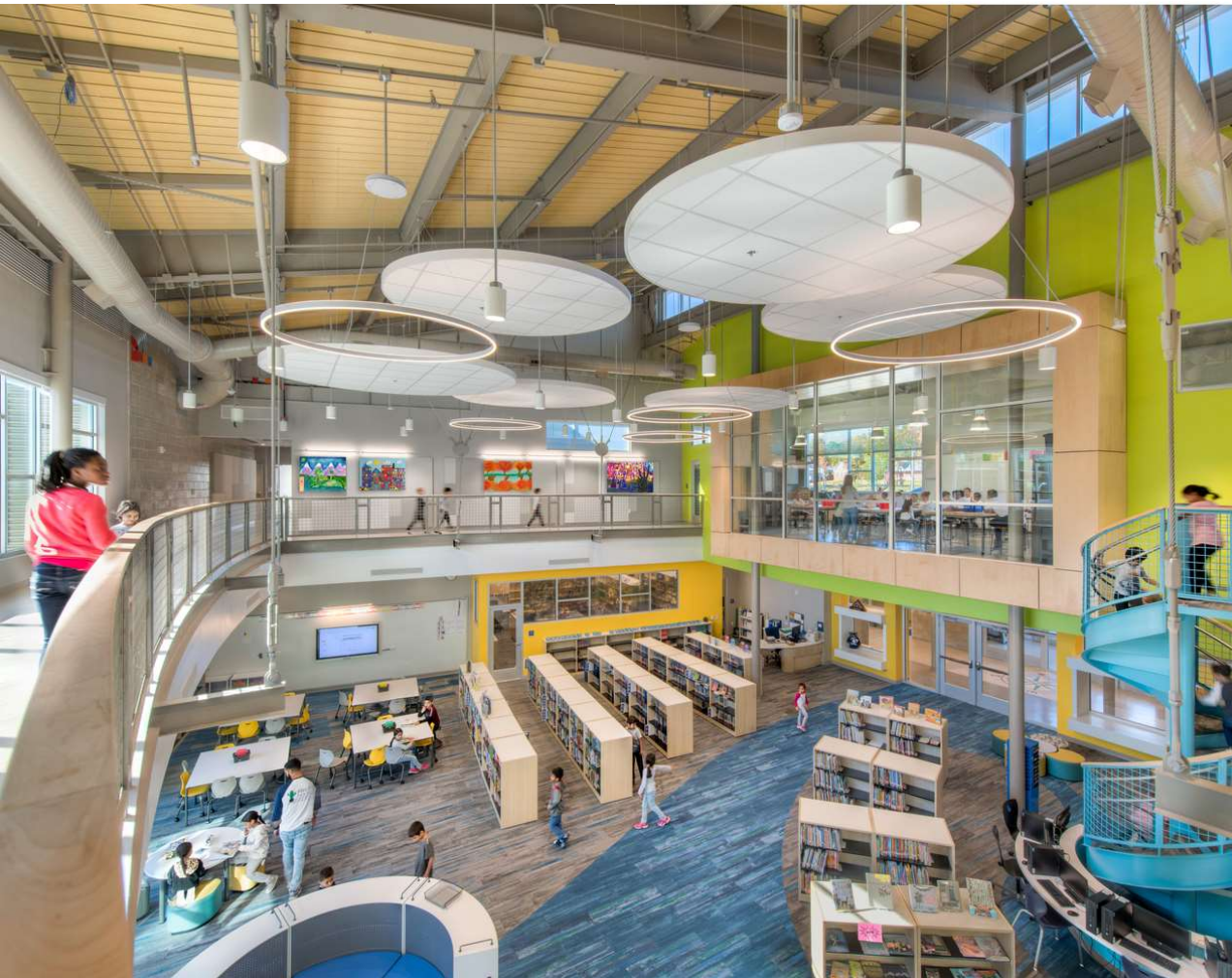


# Harrisonburg High School 2





# Anne E. Moncure Elementary School





# Vision and Guiding Principles

Create diverse, inclusive, real-world learning environments that support a new model of instruction that recognizes students as individuals and supports differentiated teaching and learning.

communal

versatile

interdisciplinary

sustainable

**Create learning environments that blur the lines between workplace and school and respond to educational programs today and tomorrow.**



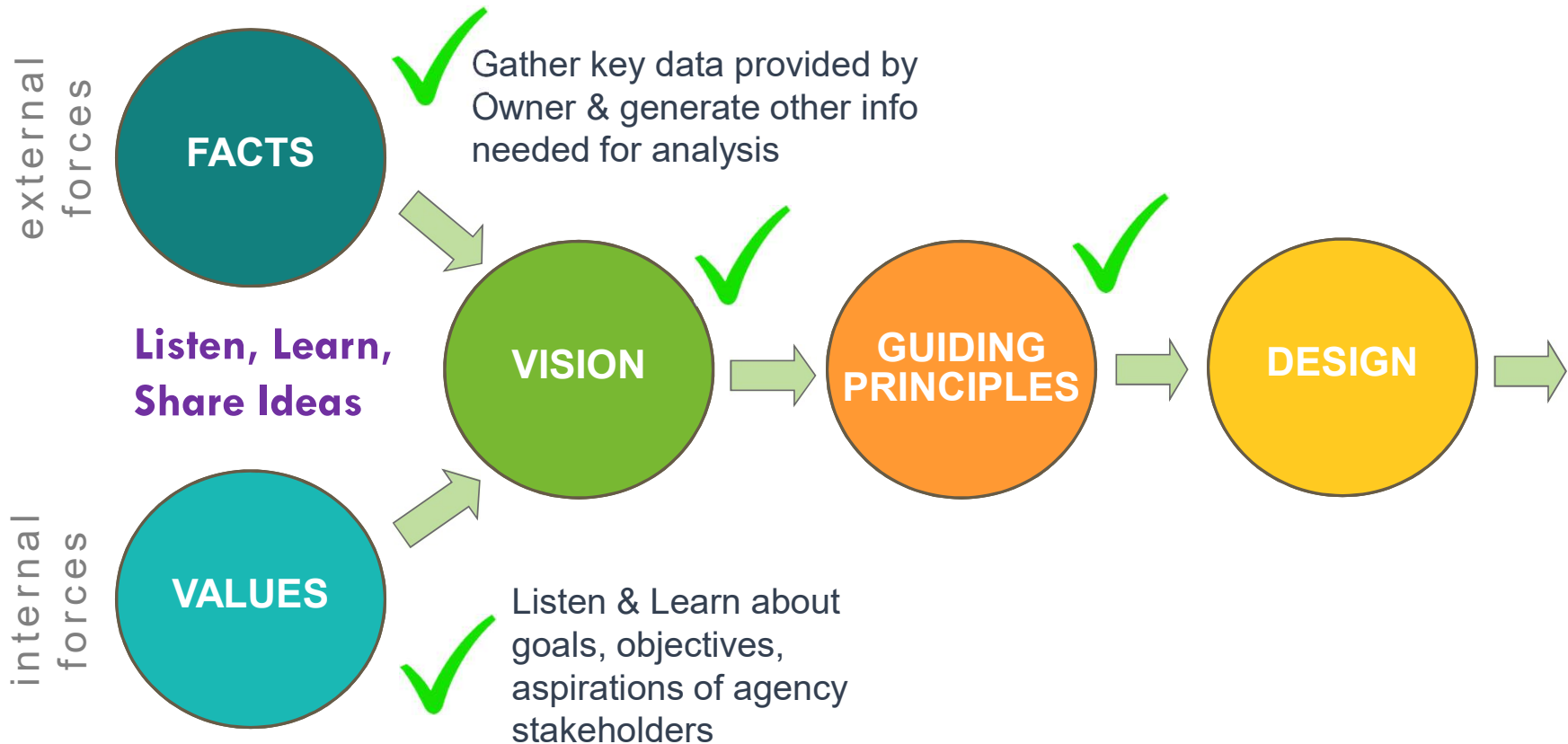
Stafford County Public Schools  
Inspire. Empower. Excel.



C5W



**Stafford County Public Schools**  
Inspire. Empower. Excel.



# Collaborative Visioning + Design Process



# The Stafford Community Is Important To Us

Stafford High School



County Courthouse



Quantico



Military Recruiting Offices

Univ. Mary Washington – Stafford Campus





# Stafford Community Resources



Crow's Nest Natural Area Preserve



Rocky Pen Run Reservoir



# Next Generation Learning High School





# Industrialization Model for Education

How Have Teaching and Learning Changed?

- Develops career-ready workers that reflect the industrial ethos of a factory production line
- Teaching to the classroom norm or one learning style
- Teacher “stands and delivers” a prescribed package of information



1920



1960



2021

# What is Influencing the next high school?





# 3 Elements of Next Generation Learning

## Innovative Learner-Centered Spaces

- Spaces that reflect that students DO matter
- Authentic project-based, collaborative learning zones

## Flexible/Informal Spaces

- Allow for both traditional teaching and active learning
- Accommodate for a variety of group sizes

## Building as a Teaching Tool

- Integration of building design with curriculum
- Sustainable features - exterior and interior of building





It's all about *THEIR* success







**Flexible Learning Environments | Not Program-Specific**





Flexibility At Work

Project-Based Learning





Instruction Space





Flexibility At Work

## Student Presentation Space



# Learner Centered Spaces with Mobile Furniture





**INTERIOR TRANSPARENCY**

**WARM + WELCOMING**

**ABUNDANT NATURAL DAYLIGHTING**







**SPACES REFLECT THAT STUDENTS DO MATTER**

**AUTHENTIC, REAL-WORLD, HANDS-ON,  
INQUIRY-BASED + ACTIVE PROJECT-BASED LEARNING**

**Agile Spaces Support Student Choice + Voice**



# The Joy of Learning







QUICKLY CONVEY IDEAS



EXPERIENCE VIRTUAL REALITY



A vibrant, modern school interior. The space is characterized by large, multi-paned windows that offer a view of a lush green campus with trees and walkways. The floor is made of light-colored wood. In the foreground, several students are walking or sitting on colorful, modular furniture. A large, colorful 'CTE' logo is mounted on the wall to the left. The overall atmosphere is bright, open, and collaborative.

# Influenced by Higher Education and CTE

**COLLABORATE WITH BUSINESS/INDUSTRY  
PARTNERS**

STRENGTHEN THE CONNECTION  
BETWEEN **CONCEPT** AND **APPLICATION**

**HIGH SCHOOL FOR FUTURE READINESS**

SHAPING THE PRODUCTIVE CITIZENS OF TOMORROW



# Hands-On Learning By Doing Spaces



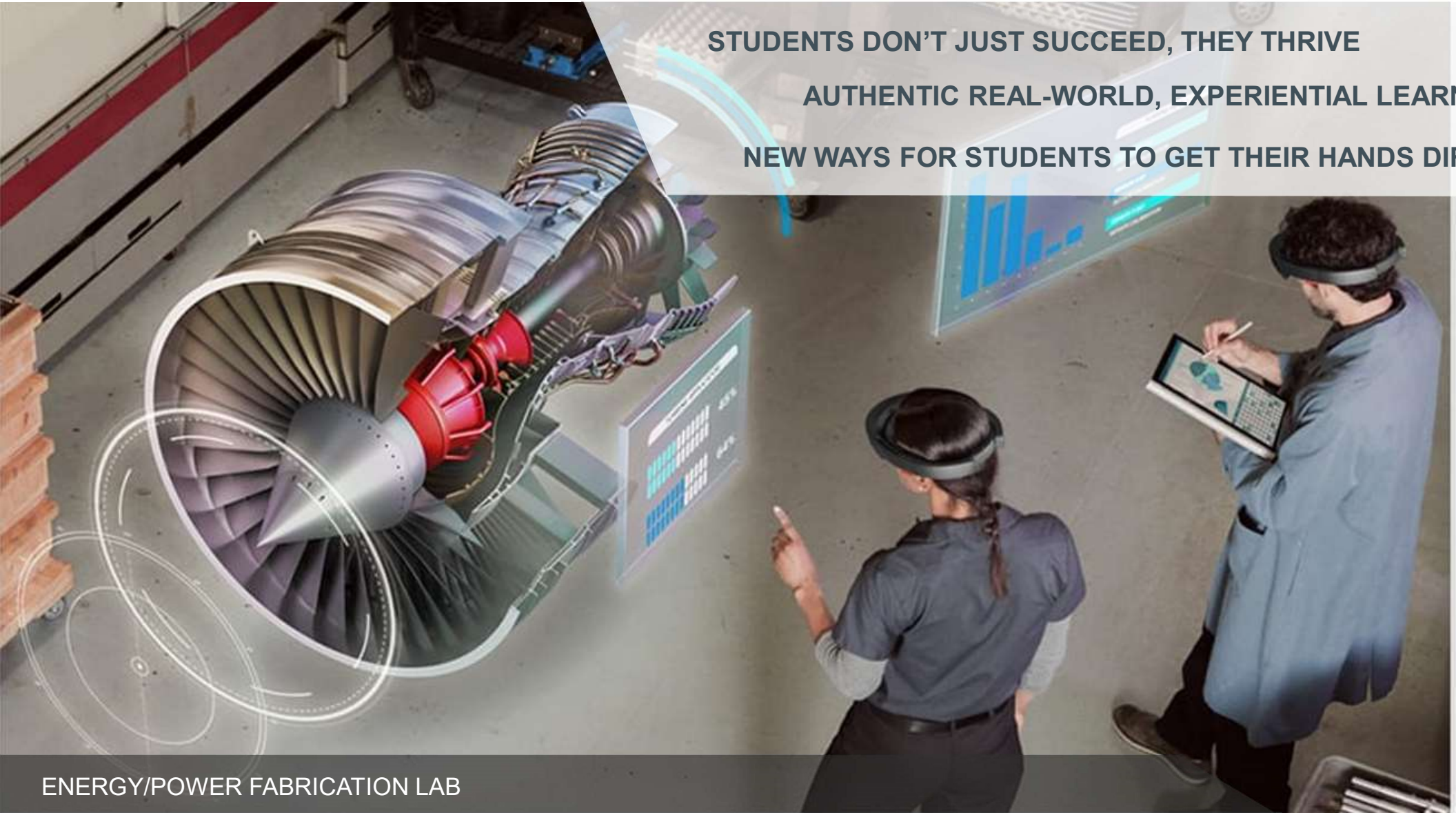
**OVER 75% OF STUDENTS LEARN BEST BY DOING  
OVER 90% OF STUDENTS LEARN BEST BY TEACHING OTHERS**

STUDENTS DON'T JUST SUCCEED, THEY THRIVE

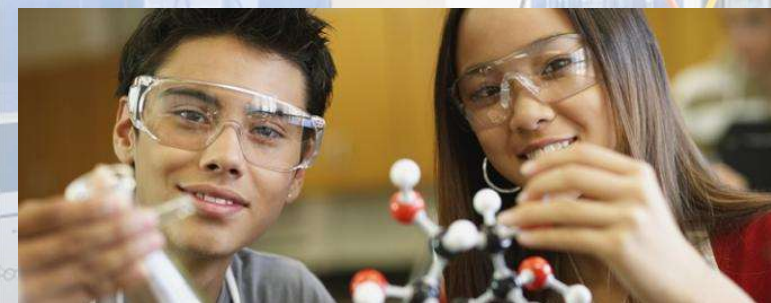
AUTHENTIC REAL-WORLD, EXPERIENTIAL LEARNING

NEW WAYS FOR STUDENTS TO GET THEIR HANDS DIRTY

ENERGY/POWER FABRICATION LAB







TECHNOLOGY ENABLED ACTIVE  
LEARNING





**SOCIOLOGICAL + TECHNOLOGICAL EQUITY**  
**TECHNOLOGY: AUTOMATIC,  
INTUITIVE + SEAMLESS WITH  
LEARNING  
INFRASTRUCTURE FOR FUTURE ADAPTABILITY**



**A Hands-On Approach**





**EXPLORE INTERSECTIONS OF LEARNING  
LARGE GROUP**

**ENGAGE STUDENTS IN A WIDE RANGE  
OF ACTIVITIES**

**SUPPORT CREATIVE + INTELLECTUAL  
PURSUITS**

**Flex Space**



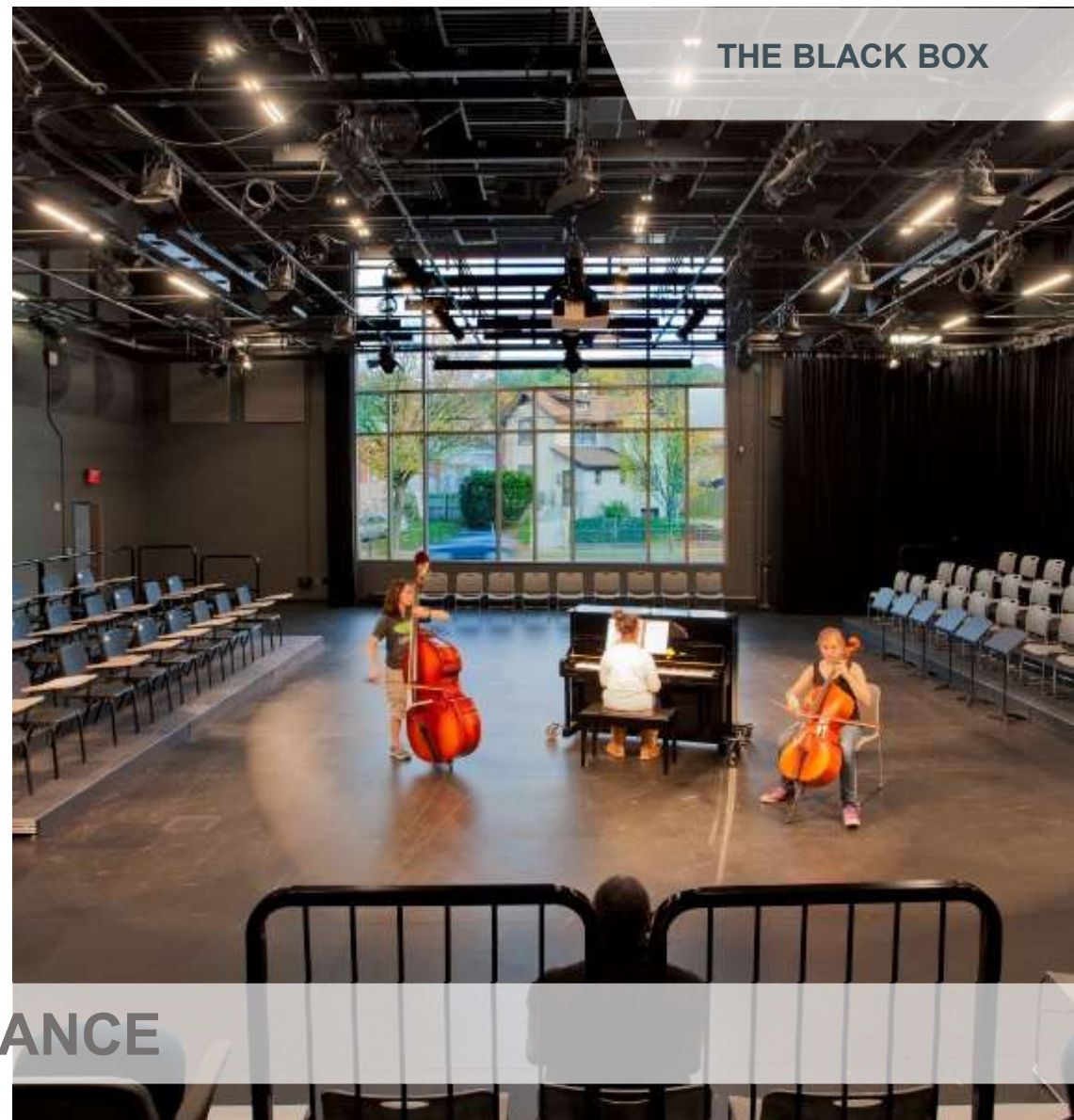
# Community Spaces for Arts + Sports







LEARN THROUGH PERFORMANCE



THE BLACK BOX



# Security + Safe School Design

## CPTED Principles

- Controlled access for all (concentric rings of security)
- Surveillance through transparency + supervision
- Real-time communication for teachers + staff





# Sustainable Design – Healthy Decisions



**ABUNDANT DAYLIGHT IN ALL LEARNING SPACES**





# Mental + Emotional Well-Being

An architectural rendering of a modern building courtyard. The building features a mix of red brick and large glass panels. A white canopy is stretched over a paved walkway. People are shown walking and sitting on the steps and grass, suggesting a lively, community-oriented space. The scene is set during the day with soft lighting.

COVID RESILIENCY

**PRIDE OF PLACE – MEANINGFUL CIVIC PRESENCE**

A HOLISTIC APPROACH TO NURTURING THE MIND, BODY AND SPIRIT

**INDOOR | OUTDOOR CONNECTION**



# Outdoor Places + Spaces



...the building engages nature around its perimeter

Learning Happens Everywhere | Inside + Out





What will make this school a success?



# Step Into the Future... To Be Continued Later

## What Do *You* Envision?

Imagine this successful program 10 years from now.

What will make this school a success for...

-  Parent/Guardian
-  Student
-  Community Member
-  Educational Staff Member



Questions + Answers

Next Steps