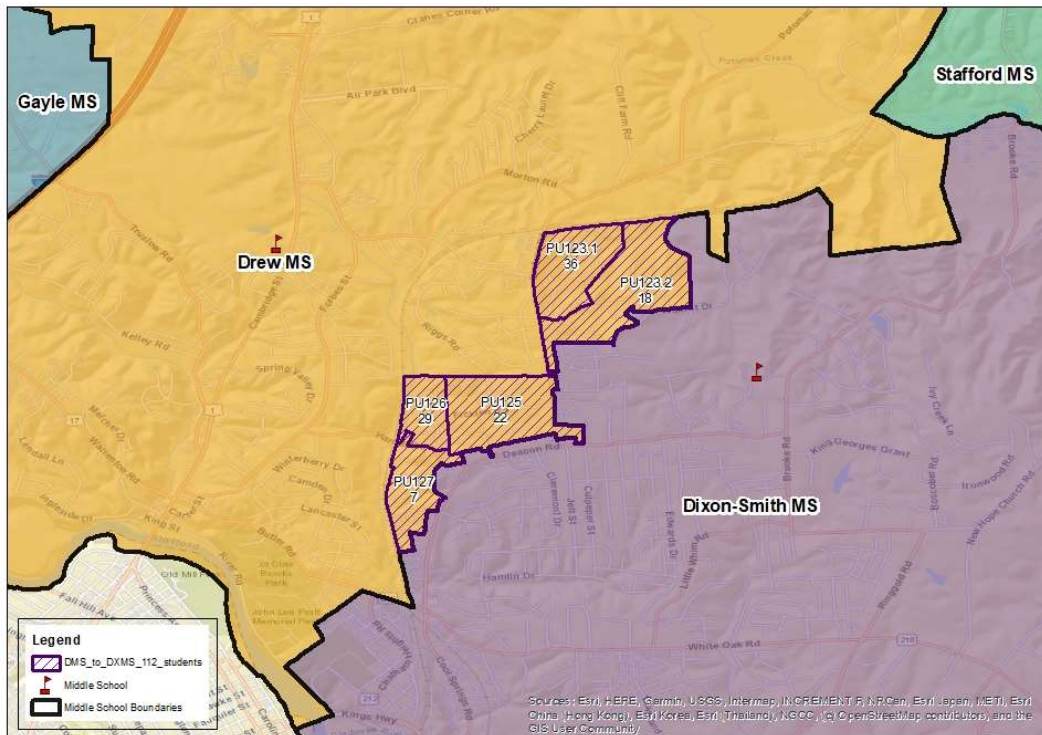


# Drew Middle School Boundary Change Scenario B



Note: Middle school enrollment totals are based on the September 30, 2021 official count.

Map prepared in January 2022 by SCPS Planning & GIS

## Highlights:

- Proposes to change Drew and Dixon-Smith boundaries
- Reassigns five (5) planning units (**112+/- students**) from Drew to Dixon-Smith
- Next year, after reassignments Dixon-Smith (83%) and Drew (91%) are projected to be under capacity.
- Five years from now, projections suggest Dixon-Smith (82%) remains under capacity, while Drew (103%) is at-capacity.
- No significant shift in demographic balance

## Subdivisions Slated For Reassignment:

Eastern portion of Leeland Station, Oaks of Highland Homes, Heather Hills, Misty Forest



Stafford County Public Schools

Inspire | Empower | Excel