



Stafford County Public Schools

Student Accommodation Report

2014-15

Demographics Planning

Pat Druash, Demographics Planner

July 30, 2014 (revised)



Table of Contents

List of Figures and Table 3

Purpose of the Student Accommodation Report 4

Overview of the School Division..... 4

Stafford County Residential Development 6

Student Membership History and Forecast.....10

Forecast Methodology10*

Capacity13

School Year 2014-1516

 School Attendance Area Boundaries16

 Feeder Patterns.....20

 Special Education Program Placements.....23

Recommendations25

*Revision of ADM numbers

List of Figures and Tables

Figures

Figure 1. 2013-2014 Student Distribution	5
Figure 2. Anticipated Residential Development in 2014-2015	7
Figure 3. 2014-15 Elementary School Attendance Area Map.....	18
Figure 4. 2014-15 Middle School Attendance Area Map.....	19
Figure 5. 2014-15 High School Attendance Area Map	20

Tables

Table 1. 2008-09 to 2013-14 March 31 Average Daily Membership.....	10
Table 2. 2014-15 to 2023-24 Forecasted Membership	10
Table 3. 2014-15 to 2023-24 Forecasted Membership by Level	11
Table 4. 2014-15 Forecasted Membership by School and Grade Level.....	11
Table 5. 2014-15 School Design Capacity and Utilization.....	13
Table 6. Base Elementary Attendance Area Changes	16
Table 7. 2014-15 Elementary to Middle School Feeder Patterns by Elementary School.....	21
Table 8. 2014-15 Elementary to Middle School Feeder Patterns by Middle School	21
Table 9. 2014-15 Middle to High School Feeder Patterns by Middle School.....	22
Table 10. 2013-14 Middle to High School Feeder Patterns by High School	22
Table 11. Special Education Low Incidence Programs by School	23

Purpose of the Student Accommodation Report

The purpose of the Student Accommodation Report (SAR) is to provide an annual comprehensive look at school facility use to include review of building capacity, student membership, and attendance boundaries. The SAR details both demographic and facility data used to support decisions related to school facility utilization for the coming school year (2014-2015). Specific information about each school is provided, as well as an overall description of membership and capacity throughout the school division.

Information provided includes:

- Capacity analysis
- Historical and forecasted student membership
- Residential developments affecting membership
- School attendance area changes

Overview of the School Division

Stafford County Public Schools is currently comprised of 17 elementary schools, eight middle schools, five high schools, and the Gary Melchers complex, which includes Head Start and alternative education programs. See Figure 1 for the distribution of students throughout Stafford County.

Stafford County Residential Development

Subdivisions in Stafford County are building housing units, including single-family homes (SFD); town homes (TH), duplexes (DUP), condos (CD) and apartments (multifamily - MFD) which are expected to impact the student membership at several schools in the division (Figure 2). Numbers are based on approved construction starts (CS) and subdivision approvals showing activity from September 2013 through May 2014. The following includes the areas that expect the most housing growth in 2014 to 2015 with the associated schools:

Brentsmill: Widewater Elementary, Shirley Heim Middle, and Brooke Point High (11 SFD CS from 9/13 – 5/14, 37 from 9/12 to 8/13, 50 vacant lots).

Colonial Forge: Winding Creek Elementary, Rodney Thompson Middle, Colonial Forge High (151 SFD & TH CS from 9/13 – 5/14, 149 from 9/12 to 8/13, 115 vacant SFD, TH, and MFD).

Embrey Mill: Winding Creek Elementary, Rodney Thompson Middle, Colonial Forge High. A Preliminary Plan was approved for 1,602 SFDs, DUPs or THs, and MFDs. (86 CS for SFD & TH from 9/13 – 5/14, 38 CS from 9/12 to 8/13).

Fox Chase Commons: Falmouth Elementary, Drew Middle School, and Stafford High School. A Preliminary Plan was approved in 2013 for 99 THs.

Hills of Aquia: Widewater Elementary, Shirley Heim Middle, Brooke Point High (17 SFD CS from 9/13 – 5/14, 48 CS from 9/12 to 8/13, 87 vacant lots).

Leeland Station: Conway Elementary, Drew Middle, Stafford High (32 SFD CS from 9/13 to 5/14, 36 CS from 9/12 to 8/13, 106 vacant lots).

Liberty Knolls: Winding Creek Elementary, Rodney Thompson Middle, and Colonial Forge High (3 SFD CS from 9/13 – 5/14, 93 vacant lots).

Moncure Estates: Anthony Burns Elementary, Rodney Thompson Middle, Brooke Point High (13 SFD CS from 9/13 to 5/14, 24 CS from 9/12 to 8/13, 37 vacant lots).

Moncure Valley: Anthony Burns Elementary, Rodney Thompson Middle, and Brooke Point High (117 SFD – construction plan approved)

Poplar Estates: Margaret Brent Elementary, Rodney Thompson Middle, Mountain View High (17 SFD CS from 9/13 to 5/14, 23 CS from 9/12 to 8/13, 105 vacant lots)

Rappahannock Landing: Rocky Run Elementary, Drew Middle, Stafford High (39 TH CS from 9/13 – 5/14, 36 CS from 9/12 – 8/13). Total development projected for a total 572 townhomes a ~ 30 per year.

Seasons Landing: Stafford Elementary, Stafford Middle, Brooke Point High (8 SFD CS from 9/13 – 5/14, 31 CS from 9/12 – 8/13, 73 vacant lots remain).

Shelton Woods: Winding Creek, Rodney Thompson, Colonial Forge (95 SFD – preliminary plan approved 9/2013)

Southgate: Falmouth Elementary, Drew Middle, Stafford High (14 SFD CS from 9/13- 5/14, 20 CS from 9/12-8/13, 95 vacant lots).

Stafford Lakes Village: Rocky Run Elementary, Gayle Middle, Colonial Forge High (30 SFD CS from 9/13 – 5/14, 56 CS from 9/12 to 8/13, ~34 vacant lots remaining).

Stafford Landing: Falmouth Elementary, Drew Middle, Stafford Senior High (10 SFD CS from 9/13 – 5/14, 17 CS from, 9/12 to 8/13, 60 vacant lots remaining).

The Glens (including Millstone): Margaret Brent Elementary, Rodney Thompson Middle, Mountain View High (7 SFD CS from 9/13 – 5/14, 21 from 9/12 – 8/13, ~ 70 vacant lots remaining).

Westgate at Stafford Courthouse: Anthony Burns, Rodney Thompson, Colonial Forge High (51 SFD – preliminary plan approved 2/2013)

Woodstream: Hampton Oaks Elementary, Shirley Heim Middle, North Stafford High (38 TH CS from 9/13 – 5/14, 102 TH CS from 9/12 – 8/13, ~131 vacant lots remain).

The impact has not yet been determined for additional subdivisions proposed for development in the next several years in Stafford County. Abbreviations used are single family homes (SFDs), townhouses (THs), duplexes (DUPs) and multifamily (MFD). Some of the larger proposed subdivisions and general descriptions are included below:

- **Abberly at South Campus:** The Preliminary Plan is under review for 288 MFDs located south of Potomac Church Road and north of Jumping Branch Road. The location is south of Stafford Hospital. Schools affected would be Stafford Elementary, Stafford Middle, and Brooke High School.
- **Aquia Towne Center:** A Construction Plan was approved in August 2007 for 350 'multifamily structures' and mixed-use development located directly east of U.S. 1 and south of Washington Drive. Rezoning was approved in 2014 for 287 MFD. Land has been cleared but there has been no further activity. Schools affected would be Moncure Elementary, Shirley Heim Middle, and Brooke Point High.
- **Clift Farm Quarter Subdivision:** A Construction Plan was approved in August 2009 for 350 SFDs and 325 THs. It is located directly east of U.S. 1 along Eskimo Hill Road. There has been no activity since that time and the rezoning request have not been approved. Schools affected would be Falmouth Elementary, Drew Middle, and Brooke Point High.
- **George Washington Village:** Rezoning is under review for a development of 2,948 SFDs, THs, and MFDs. The development is located on the west side of 95, south of the commuter lot on Courthouse Road. Schools affected would be Winding Creek Elementary, Rodney Thompson Middle, and Colonial Forge High.
- **Oakenwold:** Rezoning is under review for a development of 650 SFDs, THs, and MFDs. It is located on the west side of Interstate 95, north Jefferson Davis Highway north of the Stafford Airport. Schools affected would be Margaret Brent Elementary, Drew Middle, and Colonial Forge High.
- **Shelton Knolls:** Rezoning has been approved for 94 SFDs located close to the Shelton Shop Road intersection with Courthouse Road. Schools affected would be Garrisonville Elementary, A.G. Wright Middle, and Mountain View High.
- **Staffordshire Subdivision:** A Preliminary Plan was submitted in Nov 2004 for 336 SFDs. A Construction Plan for section 2 was submitted in Jun 2008 for 156 SFDs. It is located south of Kellogg Mill Road and west of Abel Reservoir. There has been no activity. Schools affected would be Falmouth Elementary, Drew Middle, and Stafford Senior High.
- **The Reserve at Woodstock Lane:** Rezoning is under review for 41 SFDs located off Woodstock Lane in the Widewater District. Schools affected would be Widewater Elementary, Shirley Heim Middle, and Brooke Point High School.
- **Whitson Woods:** A Preliminary Plan is was approved in June 2014 for 55 THs. It is located on the west side of High Point Boulevard, south of Independence in North Stafford. Schools affected would be Kate Waller Barrett Elementary, H.H. Poole Middle, and North Stafford High.
- **Winding Creek:** A Rezoning is under review for 97 SFDs located on both sides of Winding Creek Road, north of Embrey Mill Road. Schools affected would be Winding Creek Elementary, Rodney Thompson Middle, and Colonial Forge High.

Student Membership History and Forecast

Average daily membership (ADM) is determined by dividing the aggregate number of days of membership of all students during a school year by the number of days school is in session. The March 31 ADM is calculated using data from the first day school is in session through the last school day in March.

Table 1. 2008-09 to 2013-14 March 31 Average Daily Membership

School Year	2008-09	2009-10	2010-11	2011-12	2012-13	2013-14
ADM	26,351	26,649	26,746	26,774	26,905	26,901

Table 2. 2014-15 to 2023-24 Forecasted Total Student Membership

School Year	2014-15	2015-16	2016-17	2017-18	2018-19	2019-20	2020-21	2021-22	2022-23	2023-24
Forecast	26,973	26,987	27,067	27,154	27,259	27,296	27,441	27,521	27,623	27,886

Forecast Methodology

The forecasting methodology used to predict the number of students who will attend Stafford County Public Schools for the next ten years was developed by the Operations Research/Education Laboratory of North Carolina State University (OREd). It is a combination of the cohort progression method, comprehensive land use studies, historical membership data, out-of-capacity analyses, student generation ratios, and school site/attendance zone optimization.

The cohort progression method involves applying an average growth rate over time to the current year's membership by grade level cohort. The cohort-progression ratio is used as a basis for predicting student membership by grade level. The kindergarten calculation is based on birth data to forecast kindergarten enrollment. An average ratio of the number of kindergarten students compared to the number of live births six years earlier for the previous school years is applied to the number of live births of Stafford County residents six years prior to the school year being forecasted.

The cohort-progression ratio is the number of students in a particular grade divided by the number of students in the previous grade in the previous school year. In other words, it is the rate of students in the cohort being "promoted" to the next grade level. This ratio varies by year and grade level based on families moving in and out of the county, students transferring to different schools within the school division, student retention, and other factors. The cohort-progression ratio incorporates all the different factors affecting student enrollment, retention, and promotion in one number. Growth factors are applied after the cohort progression ratios using construction data and a student generation ratio (the number of students typically added by new development dwelling types). *Anticipated transfers for the 2014-15 school year are not incorporated as they cannot be accurately predicted.*

Table 3. 2014-15 to 2023-24 Membership Forecast by Levels

Elementary	2014-15	2015-16	2016-17	2017-18	2018-19	2019-20	2020-21	2021-22	2022-23	2023-24
Total	11,594	11,581	11,750	11,746	11,742	11,767	11,802	11,889	11,971	12,080

Middle	2014-15	2015-16	2016-17	2017-18	2018-19	2019-20	2020-21	2021-22	2022-23	2023-24
Total	6,334	6,430	6,325	6,347	6,406	6,513	6,548	6,488	6,496	6,551

High	2014-15	2015-16	2016-17	2017-18	2018-19	2019-20	2020-21	2021-22	2022-23	2023-24
Total	9,045	8,976	8,992	9,061	9,111	9,016	9,091	9,144	9,156	9,255

Table 4. 2014-15 Forecasted Membership by School and Grade Level

<i>Elementary Schools</i>	K	1	2	3	4	5	2014-15 Total	2013-14 Unadjusted ADM*
Anthony Burns	118	127	133	115	118	130	741	739
Conway	139	141	144	157	140	158	879	861
Falmouth	85	86	103	82	75	103	534	533
Ferry Farm	95	101	106	103	97	100	602	610
Garrisonville	80	70	90	83	82	90	495	496
Grafton Village	85	83	83	79	103	104	537	535
Hampton Oaks	125	138	163	123	114	131	794	792
Hartwood*	90	102	98	88	88	94	560	551
KW Barrett	130	145	122	138	110	127	772	763
Margaret Brent	131	136	135	133	146	151	832	858
Moncure	103	107	104	124	100	123	661	672
Park Ridge	95	84	101	111	100	100	591	611
Rockhill	96	88	101	106	99	111	601	592
Rocky Run	131	135	131	128	125	133	783	789
Stafford	113	122	105	111	120	121	692	695
Widewater	138	150	150	150	129	131	848	825
Winding Creek	106	99	96	118	115	138	672	687
Grade Level Total	1860	1914	1965	1949	1861	2045	11594	11609

<i>Middle Schools</i>	6	7	8	2014-15 Total	2013-14 Unadjusted ADM*
Dixon Smith	253	231	282	766	795
Drew	205	158	164	527	498
Gayle	280	322	319	921	935
H.H. Poole	255	292	287	834	835
Rodney Thompson	329	362	360	1031	1100
Shirley Heim	342	312	327	981	907
Stafford	180	179	171	530	490
Wright	245	261	228	744	780
Grade Level Total	2089	2117	2138	6334	6340

<i>High Schools</i>	9	10	11	12	2014-15 Total	2013-14 Unadjusted ADM*
Brooke Point	448	422	450	425	1745	1730
Colonial Forge	455	501	490	490	1936	1962
Mountain View	390	455	433	467	1745	1808
North Stafford	422	380	477	395	1674	1650
Stafford	514	482	461	488	1945	1862
Grade Level Total	2229	2240	2311	2265	9045	9012

*The Virginia Department of Education adjusts to total ADM number for every division. The total ADM number is adjusted by removing pupils under age 5 and pupils for whom the state's share of tuition to a private day or private residential program was funded with Comprehensive Services Act (CSA) funds. Total pupils reduced from the total ADM – 59 (26,960 to 26,901).

Capacity

Each school building has a design capacity based on architectural standards and local school division standards. The actual (program) capacity of any school facility will typically deviate in some degree from this design capacity for any particular school year due to programmatic and other current or proposed utilization factors.

Program capacities are calculated using the Department of Education's (DOE) *School Capacity Worksheets* which are based on the DOE Standards of Quality for classroom usage and portray all classrooms being filled at the designated level for each grade/subject. Classroom sizes are dependent on the annual enrollment of students and, therefore, will differ from the exact SOQ number designated for each classroom in the calculation.

Table 5. School Design Capacities and Utilization

<i>Elementary Schools</i>	Design Capacity	Design Capacity Usage %	Program Capacity 2013-14	Program Capacity Usage %	2014-15 Forecast
A Burns	950	78	778	95	741
Conway*	950	93	910	97	879
Falmouth	794	67	624	86	534
Ferry Farm	732	82	648	93	602
Garrisonville*	768	64	610	81	495
Grafton Village**	754	71	n/a	n/a	537
Hampton Oaks	950	84	883	90	794
Hartwood	649	86	530	106	560
Kate Waller Barrett	950	81	891	87	772
Margaret Brent	950	88	900	92	832
Moncure*	754	88	740	89	661
Park Ridge*	843	70	734	81	591
Rockhill*	843	71	700	86	601
Rocky Run	950	82	876	89	783
Stafford*	794	87	736	94	692
Widewater*	843	101	893	95	848
Winding Creek*	925	73	767	88	672
Elementary Total	14399	81			11594
Program Capacity Totals w/o Grafton Village			12006	90	11057

* Schools with Pre-K classes - accounted for in Program Capacity, but are not included in the ADM.

**Grafton Village Elementary was closed for renovation during the 2013-14 school year. Students were housed at Stafford Middle School.

<i>Middle Schools</i>	Design Capacity	Design Capacity Usage %	Program Capacity 2013-14	Program Capacity Usage %	2014-15 Forecast
Dixon-Smith	1100	70	932	82	766
Drew	650*	81	517*	102	527
Gayle	1100	84	938	98	921
H.H. Poole	1100	76	963	87	834
Rodney Thompson	1100	94	988	104	1,031
Shirley Heim	1100	89	847	116	981
Stafford**	1100	48	n/a**	n/a**	530
Wright	920	82	740	102	744
Middle Total	8170	78			6334
Program Capacity Totals w/o Stafford MS			5925	98	5804

*Design capacity reduced by 6 rooms designated for the Empfield Day School. In addition, 6 regular classrooms are used for special services (8 students per class - capacity for 150 students), lowering program capacity.

**2013-14 Renovation of Grafton Village Elementary – students were housed at Stafford Middle School. Additional modular classrooms (8) were added to increase elementary school swing space. Modularity are being removed in the summer of 2014.

<i>High Schools</i>	Design Capacity	Design Capacity Usage %	Program Capacity 2013-14	Program Capacity Usage %	2014-15 Forecast
Brooke Point	1800	97	2020	86	1745
Colonial Forge**	1875	103	2243	86	1936
Mountain View	1800	97	2029	86	1745
North Stafford	1925	87	2233	75	1674
Stafford*	1850	105	1913	102	1945
High Total	9250	98	10438	87	9045

*Two modular classrooms were added in 2011-12. Fifty students added to design and program capacity.

**Two modular Health & PE classrooms (25 students each) and a JROTC Trailer (25 students) added in 2013-14. Seventy five students added to design capacity.

Special services programming, such as specific classes for students with disabilities and classrooms for ESL, physical therapy, reading specialists, math specialist, etc. can lower or increase the actual program capacity of schools, as these programs often utilize classrooms that are categorized as general education in design capacity calculations. As the number of school division special programs vary among schools, their impact on capacity will also vary among schools and school years with changes to the number and/or locations of these programs.

High school program capacities exceed design capacities in most situations. Program capacity calculations count students in gyms, art & music rooms, career & technology labs, and computer labs throughout the schools. These areas are counted as 0 in design capacity calculations based on the school divisions standards. In addition, the formula also accounts for students on work release programs and students that are transported to programs such as Governors' schools and vocational schools.

School Year 2013-14 Changes

School Attendance Area Boundaries

The school attendance area boundaries were adjusted for two schools in the 2013-14 school year to increase transportation efficiency. The redistricting is based on the permanent closure of a section of Rocky Run Road and Brookview Road due to the damming of Rocky Pen Run to create a new reservoir. The following streets will change base schools as indicated:

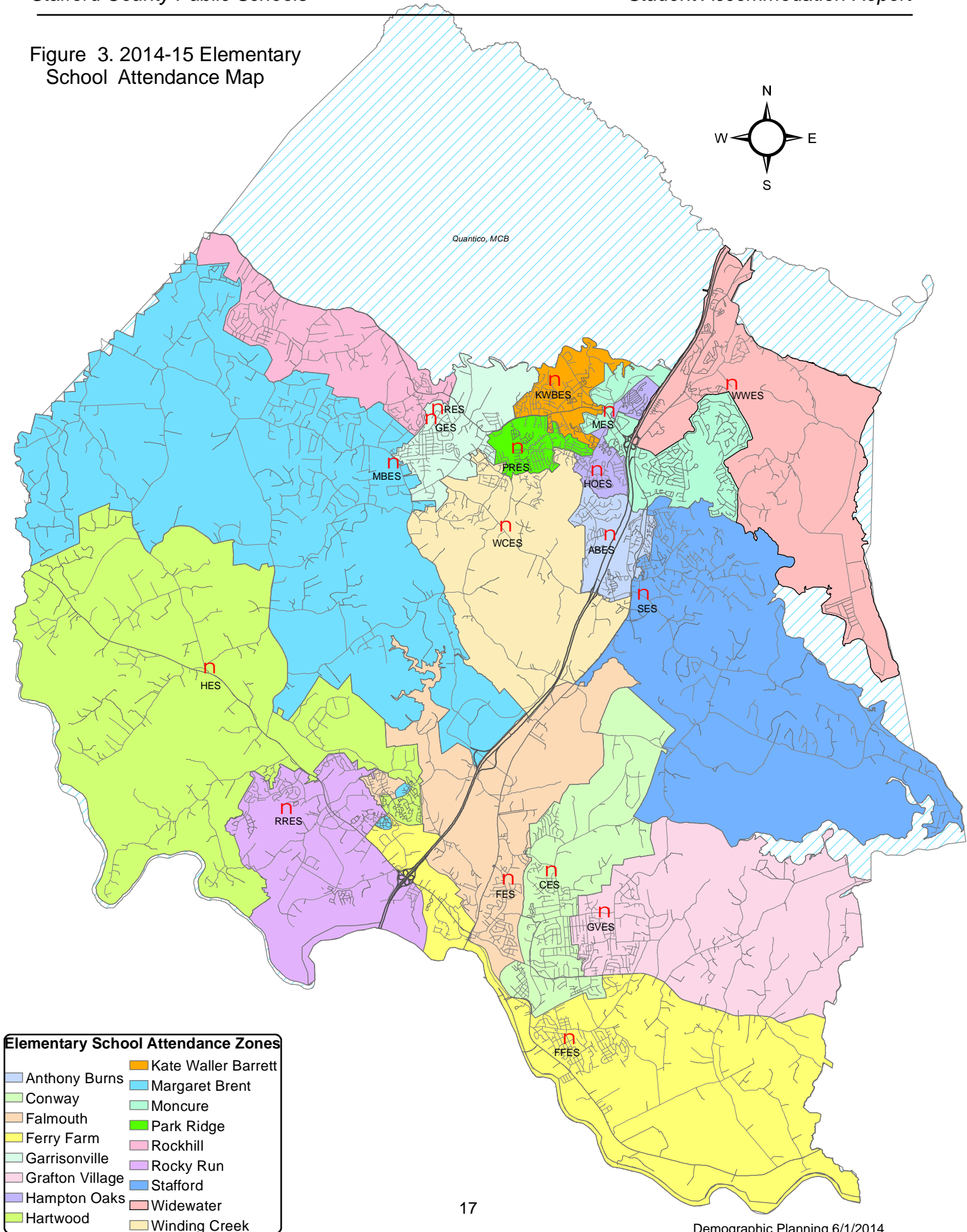
Table 6. 2013-14 Base Elementary Attendance Area Changes

Street	2012-13 Elementary	2013-14 Elementary
12 Cool Well Court (previously 65 Berea Woods Dr)	Hartwood	Rocky Run
Brookview Road	Hartwood	n/a - submerged
131 – 224 Rocky Run Road	Hartwood	Rocky Run
25-50 Burgess Lane	Hartwood	Rocky Run

Redistricting Middle and Elementary Schools

Middle and Elementary School Redistricting Committees were established in December 2013 to review options for relieving overcrowding at Rodney Thompson Middle School and Widewater Elementary School. Proposed changes included seven options for relieving Widewater Elementary School and four options for relieving Rodney Thompson Middle School. The Elementary School Committee recommended redistricting the Port Aquia subdivision to Moncure Elementary for the 2014-15 school year and revisiting additional moves when the new Moncure Elementary School building opens. The Middle School Committee recommended no action for the 2014-15 school year, monitoring enrollment at the middle schools, and reviewing redistricting options for the 2015-16 school year. Administrative staff recommended moving approximately 100 middle school students from Rodney Thompson Middle School to Stafford Middle School in 2014-15. The School Board decided not to take any action for the 2014-15 school year but requested review of both elementary and middle school enrollments/capacities for possible redistricting in 2015-16.

Figure 3. 2014-15 Elementary School Attendance Map



Elementary School Attendance Zones

Anthony Burns	Kate Waller Barrett
Conway	Margaret Brent
Falmouth	Moncure
Ferry Farm	Park Ridge
Garrisonville	Rockhill
Grafton Village	Rocky Run
Hampton Oaks	Stafford
Hartwood	Widewater
	Winding Creek

Feeder Patterns

The following tables list the elementary/middle/high school feeder pattern combinations for the 2014-15 school year. Each middle and high school receives students from three to five elementary or middle schools, respectively (Tables 7 - 10).

Table 7. 2014-15 Elementary to Middle School Feeder Patterns by Elementary School

Elementary School	Middle School
A Burns ES	Stafford MS Thompson MS
Conway ES	Dixon-Smith MS Drew MS
Falmouth ES	Drew MS Gayle MS
Ferry Farm ES	Dixon-Smith MS Drew MS Gayle MS
Garrisonville ES	Thompson MS Wright MS
Grafton Village ES	Dixon-Smith MS
Hampton Oaks ES	Heim MS Poole MS
Hartwood ES	Gayle MS
KW Barrett ES	Poole MS Wright MS
M Brent ES	Drew MS Gayle MS Thompson MS Wright MS
Moncure ES	Heim MS Poole MS
Park Ridge ES	Poole MS Thompson MS
Rockhill ES	Wright MS
Rocky Run ES	Drew MS Gayle MS
Stafford ES	Stafford MS
Widewater ES	Heim MS
Winding Creek ES	Poole MS Stafford MS Thompson MS

Table 8. 2014-15 Elementary to Middle School Feeder Patterns by Middle School

Middle School	Elementary School
Dixon-Smith MS	Conway ES Grafton Village ES Ferry Farm ES
Drew MS	Conway ES Falmouth ES Ferry Farm ES M Brent ES Rocky Run ES
Gayle MS	Falmouth ES Ferry Farm ES Hartwood ES M Brent ES Rocky Run ES
Heim MS	Hampton Oaks ES Moncure ES Widewater ES
Poole MS	Hampton Oaks ES KW Barrett ES Moncure ES Park Ridge ES Winding Creek ES
Thompson MS	A Burns ES Garrisonville ES M Brent ES Park Ridge ES Winding Creek ES
Stafford MS	A Burns ES Stafford ES Winding Creek ES
Wright MS	Garrisonville ES KW Barrett ES M Brent ES Rockhill ES

Table 9. 2014-15 Middle to High School Feeder Patterns by Middle School

Middle School	High School
Dixon-Smith MS	Stafford HS
Drew MS	Brooke Point HS Colonial Forge HS Stafford HS
Gayle MS	Colonial Forge HS Mountain View HS Stafford HS
Heim MS	Brooke Point HS North Stafford HS
Poole MS	Colonial Forge HS North Stafford HS
Thompson MS	Brooke Point HS Colonial Forge HS Mountain View HS North Stafford HS
Stafford MS	Brooke Point HS Colonial Forge HS
Wright MS	Mountain View HS North Stafford HS

Table 10. 2014-15 Middle to High School Feeder Patterns by High School

High School	Middle School
Brooke Point HS	Drew MS Heim MS Stafford MS Thompson MS
Colonial Forge HS	Drew MS Gayle MS Poole MS Thompson MS Stafford MS
Mountain View HS	Gayle MS Thompson MS Wright MS
North Stafford HS	Heim MS Poole MS Thompson MS Wright MS
Stafford HS	Dixon-Smith MS Drew MS Gayle MS

Special Education Program Placements

Each school currently includes one or more special education programs that require dedicated instructional space. The table located below shows the current programs at each school and the proposed programs for the 2013-14 school year (Table 11).

Table 11. Special Education Low Incident Programs by School

<i>Elementary Schools</i>	2013-2014 Programs	# Classrooms	2014-2015 Programs	# Classrooms
<i>Anthony Burns</i>	Autism Preschool	2 1	Autism Emotional Behavioral Support (From HOES)	2 1
<i>Conway</i>	Autism Preschool	2 1	Autism Preschool	2 1
<i>Falmouth</i>	Learning Support II	2	Learning Support II MD	2 1
<i>Ferry Farm</i>	Learning Support I	2	Learning Support I	2
<i>Garrisonville</i>	Autism Preschool HI/Deaf	2 1 1	Autism Preschool HI/Deaf	2 1 1
<i>Grafton Village</i>	Emotional Behavioral Support Preschool Preschool (2 yr old)	1 1 1	Emotional Behavioral Support Preschool Preschool (2 yr old)	1 1 1
<i>Hartwood</i>	Emotional Behavioral Support Preschool	1 1	Emotional Behavioral Support Preschool	1 1
<i>Hampton Oaks</i>	Emotional Behavioral Support	1		
<i>KW Barrett</i>	Autism	2	Autism	2
<i>M Brent</i>	Learning Support II Multiple Disabilities	2 1	Learning Support II Multiple Disabilities	1 1
<i>Moncure</i>	Emotional Behavioral Support Learning Support I	1 1	Emotional Behavioral Support Learning Support I Preschool (2 yr old)	1 1 1
<i>Park Ridge</i>	Autism Preschool	1 1	Autism Preschool	2 1
<i>Rockhill</i>	Preschool Learning Support I	1 2	Preschool Learning Support I	2 2
<i>Rocky Run</i>				
<i>Stafford</i>	Autism Preschool Autism	1 1	Autism Preschool Autism	1 1

<i>Winding Creek</i>	Autism Preschool Preschool Autism	2 2 1	Autism Preschool Preschool Autism	2 2 1
<i>Widewater</i>	Preschool	1	Preschool	1
<i>Headstart</i>			Preschool	1
<i>Middle Schools</i>	2013-2014 Programs	# Classrooms	2014-2015 Programs	# Classrooms
<i>Drew</i>	Multiple Disabilities Learning Support II Empfield Day School	1 2 4	Multiple Disabilities Learning Support II Empfield Day School	1 2 4
<i>Dixon-Smith</i>	Autism	1	Autism	1
<i>Gayle</i>	Learning Support I Emotional Behavioral Support	2 1	Learning Support I Emotional Behavioral Support	2 1
<i>HH Poole</i>	Autism Learning Support II	2 1	Autism Learning Support II	2 1
<i>Shirley Heim</i>	Learning Support I	1	Learning Support I	1
<i>Stafford</i>				
<i>Rodney Thompson</i>	Autism Emotional Behavioral Support	1 1	Autism	2
<i>A.G. Wright</i>	Emotional Behavioral Support Learning Support I	2 1	Emotional Behavioral Support Learning Support I	2 1
<i>High Schools</i>	2013-2014 Programs	# Classrooms	2014-2015 Programs	# Classrooms
<i>Brooke Point</i>	Autism Learning Support I	2 2	Autism Learning Support I	2 3
<i>Colonial Forge</i>	Learning Support I Learning Support II	2 1	Learning Support I Learning Support II Deaf/HI	2 2 1
<i>Mountain View</i>	Autism Emotional Behavioral Support Learning Support I Multiple Disabilities	2 1 1 1	Autism Emotional Behavioral Support Learning Support I Multiple Disabilities	2 1 1 1
<i>North Stafford</i>	Autism Emotional Behavioral Support Learning Support I Learning Support II	1 1 2 1	Autism Emotional Behavioral Support Learning Support I Learning Support II	2 1 2 1
<i>Stafford</i>	Autism Learning Support I Learning Support II Public Day School	1 1 1 2	Autism Learning Support I Learning Support II Public Day School	1 1 1 2

All high schools offer Emotional Behavioral Support (EBS) Resource and Collaborative Programs.

Recommendations

- Continue the annual division wide evaluation of the program capacity for all schools. Program capacity is currently calculated utilizing the Virginia Department of Education's *Virginia Elementary School Capacity Worksheet*, *Virginia Middle School Capacity Worksheet*, and the *Virginia High School Capacity Worksheet* with input from the school administrators. Program capacity will account for instructional programs that are conducted at each school. Design capacity has been evaluated based on floor plans and the *original intent* of each classroom space. Design capacity will remain consistent each year unless construction activity changes the physical design of a school.

- Continue working with the Operations Research/Education Laboratory of North Carolina State University (OREd) to review redistricting and optimization of elementary and middle schools. High school capacities and optimization will be reviewed by staff following completion of the three new additions at Brooke Point, Colonial Forge, and Mountain View high schools. OREd and staff agreed on the following sequence for the project:
 - OREd will complete a Virtual Land Use Study/Update with a cut-off date for new, approved subdivisions of June 30th, 2014
 - OREd will prepare a 10 year Membership Forecast starting 2015-16 and will review in August 2014.
 - OREd will conduct Attendance Boundary reviews, provide optimized scenarios for boundary adjustments and present in September 2014.
 - OREd will provide a Scenario Builder Tool to adjust boundaries by area planning units (APUs) to assess impacts