

Table of Contents

List of Figures and Table 3

Purpose of the Student Accommodation Report 4

Overview of the School Division..... 4

Stafford County Residential Development 6

Student Membership History and Forecast..... 9

Forecast Methodology 9

Capacity14

School Year 2012-1316

 School Attendance Area Boundaries16

 Feeder Patterns.....20

 Special Education Program Placements.....23

Recommendations25

List of Figures and Tables

Figures

| | |
|--|----|
| Figure 1. 2011-2012 Student Distribution | 5 |
| Figure 2. Anticipated Residential Development in 2012-2013 | 7 |
| Figure 3. 2012-13 to 2017-18 Average Daily Membership Forecast with Range..... | 11 |
| Figure 4. 2012-13 Elementary School Attendance Area Map..... | 17 |
| Figure 5. 2012-13 Middle School Attendance Area Map..... | 18 |
| Figure 6. 2012-13 High School Attendance Area Map | 19 |

Tables

| | |
|--|----|
| Table 1. 2006-07 to 2011-12 March 31 Average Daily Membership..... | 9 |
| Table 2. 2012-13 to 2017-18 Forecasted Average Daily Membership..... | 9 |
| Table 3. 2012-13 to 2017-18 Forecasted Average Daily Membership by Grade Level..... | 10 |
| Table 4. 2012-13 Forecasted Average Daily Membership by School and Grade Level | 12 |
| Table 5. 2012-13 School Design Capacity and Utilization..... | 14 |
| Table 6. 2012-13 Elementary to Middle School Feeder Patterns by Elementary School..... | 21 |
| Table 7. 2012-13 Elementary to Middle School Feeder Patterns by Middle School | 21 |
| Table 8. 2012-13 Middle to High School Feeder Patterns by Middle School..... | 22 |
| Table 9. 2012-13 Middle to High School Feeder Patterns by High School | 22 |
| Table 10. Special Education Programs by School..... | 23 |

Purpose of the Student Accommodation Report

The purpose of the Student Accommodation Report (SAR) is to provide an annual comprehensive look at school facility use to include review of building capacity, student membership, and attendance boundaries. The SAR details both demographic and facility data used to support decisions related to school facility utilization for the coming school year (2012-2013). Specific information about each school is provided, as well as an overall description of membership and capacity throughout the school division.

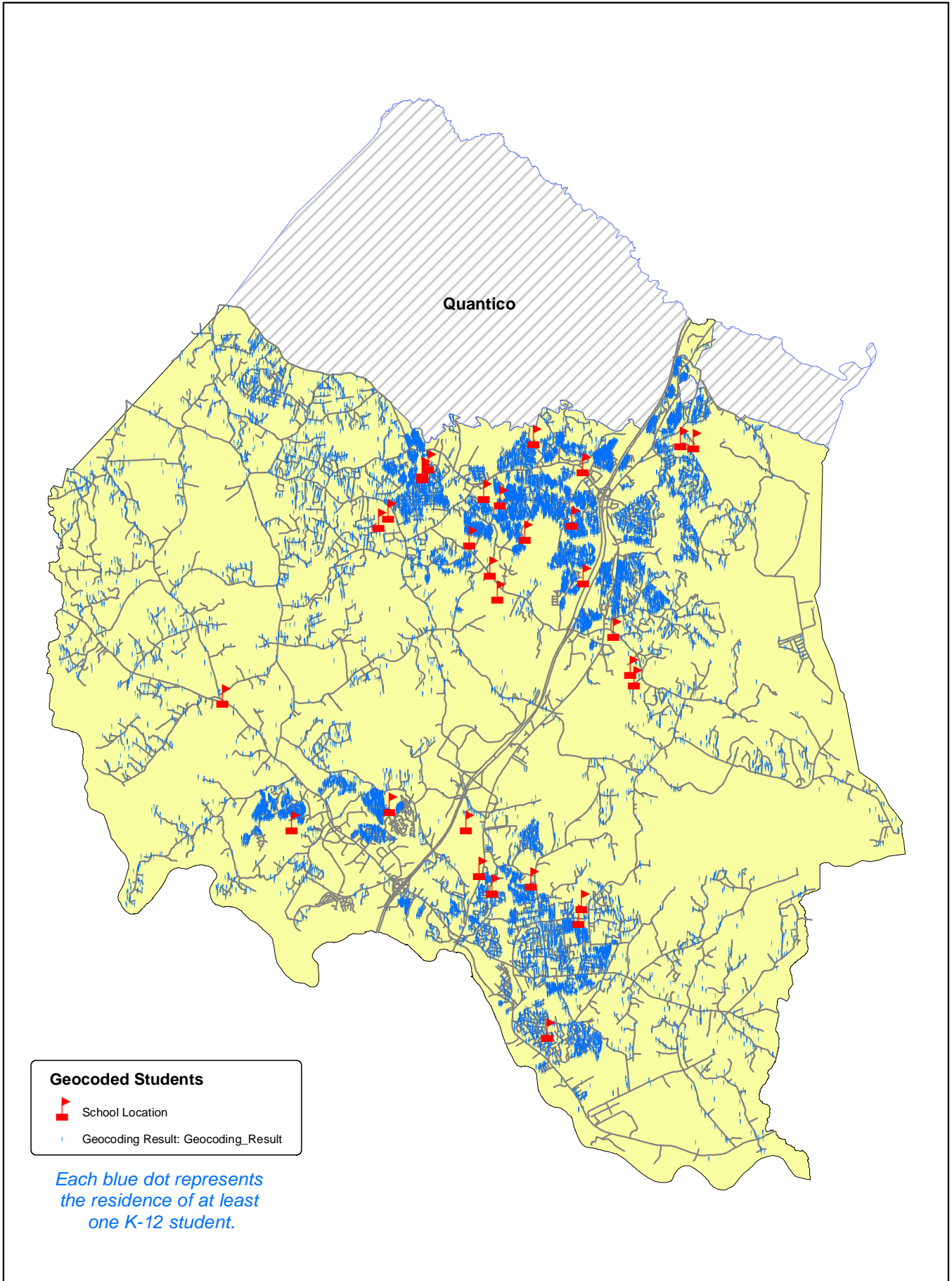
Information provided includes:

- Capacity analysis
- Historical and forecasted student membership
- Residential developments affecting membership
- School attendance area changes

Overview of the School Division

Stafford County Public Schools is currently comprised of 17 elementary schools, eight middle schools, five high schools, and the Gary Melchers complex, which includes Head Start and alternative education programs. See Figure 1 for the distribution of students throughout Stafford County.

Figure 1. 2011-2012 Student Distribution



Stafford County Residential Development

Several subdivisions in Stafford County are building additional housing units, including single-family homes (SFD), town homes (TH), duplexes (DUP), condos (CD) and apartments (APT) which are expected to impact the student membership at several schools in the division (Figure 2). Numbers are based on approved construction starts and subdivision approvals showing some activity from July 2011 through April 2012. The following includes the areas that expect the most housing growth in 2012 to 2013 with the associated schools:

Brentsmill: Widewater Elementary, Shirley Heim Middle, and Brooke Pointe High (24 SFD construction starts from 9/11 – 4/12, 21 construction starts from 9/10 to 8/11, 91 vacant lots).

Colonial Forge Subdivision: Winding Creek Elementary, Rodney Thompson Middle, Colonial Forge High (13 SFD construction starts from 9/11 – 4/12, initial plan was approved for 87 SFD and 104 TH).

Embrey Mill Subdivision: Winding Creek Elementary, H.H. Poole Middle, Colonial Forge High. A Subdivision Plat Approval was approved in 2008 for 1,337 SFDs, 762 multifamily (DUPs or THs), and 176 APTs. A Construction Plan was approved for Section 1 on 6-30-08 to build 60 SFHs and 76 THs. Land clearing and road development has begun.

Hills of Aquia: Widewater Elementary, Shirley Heim Middle, Brooke Pointe High (26 SFD construction starts from 9/11 – 4/12, 31 construction starts from 9/10 to 8/11, 167 vacant lots).

Leeland Station: Conway Elementary, Drew Middle, Stafford High (35 SFDs construction starts since September 2011, 223 vacant lots).

Rappahannock Landing: Rocky Run Elementary, Drew Middle, Stafford High (19 TH construction starts 11/11 – 4/12, 23 construction starts from 3/2011 – 6/2011). Total development projected for a total 572 townhomes a ~ 30 per year.

Seasons Landing: Stafford Elementary, Stafford Middle, Brooke Point High (22 SFD construction starts since 9/11 – 4/12, 20 from 11/10 to 8/11, 72 vacant lots remain).

Southgate: Falmouth Elementary, Drew Middle, Stafford High (152 SFD lots approved in 2005, land clearing and road development has recently begun).

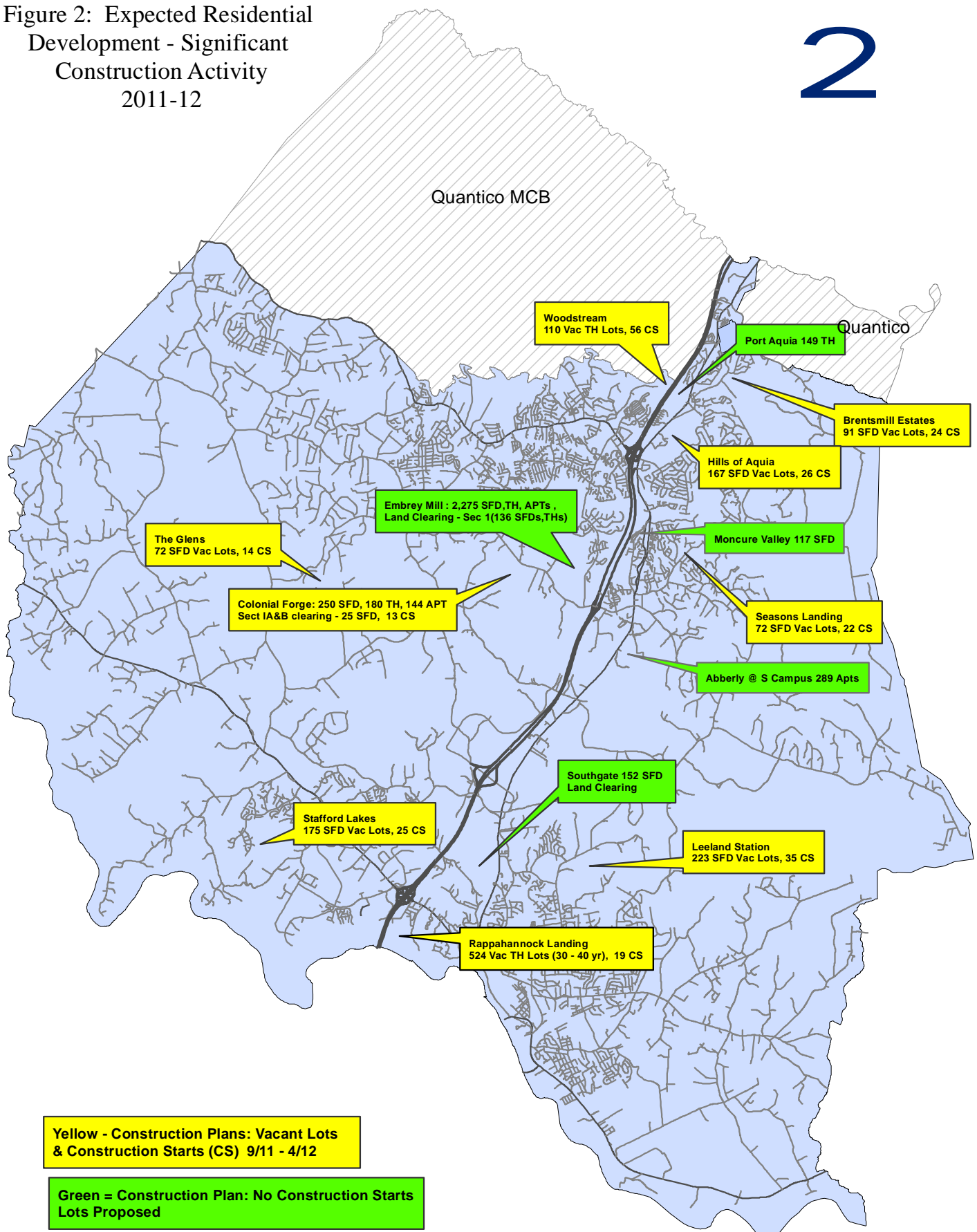
Stafford Lakes Village: Rocky Run Elementary, Gayle Middle, Colonial Forge High (25 SFD construction starts 9/11 – 4/12, 34 from 9/10 to 8/11, 175 vacant lots remaining).

The Glens (including Millstone): Margaret Brent Elementary, Rodney Thompson Middle, Mountain View High (14 SFD construction starts, 72 vacant lots remaining).

Woodstream: Hampton Oaks Elementary, Shirley Heim Middle, North Stafford High (56 TH and 18 CD from 9/11 to 4/12, 72 SFD & TH construction starts from 9/10 – 8/11, 110 vacant lots remain).

Figure 2: Expected Residential Development - Significant Construction Activity 2011-12

2



The impact has not yet been determined for several additional subdivisions proposed for development in the next several years in Stafford County. Abbreviations used are single family homes (SFHs), townhouses (THs), duplexes (DUPs) and apartments (APTs). Some of the larger proposed subdivisions and general descriptions are included below:

- **Aquia Towne Center:** A Construction Plan was approved in August 2007 for 350 'multifamily structures' and mixed-use development located directly east of U.S. 1 and south of Washington Drive. Land has been cleared but there has been no further activity. Schools affected would be MES, SHMS and BPHS.
- **Clift Farm Quarter Subdivision:** A Construction Plan was approved in August 2009 for 350 SFHs and 325 THs. It is located directly east of U.S. 1 along Eskimo Hill Road. There has been no activity since that time and the rezoning request have not been approved. Schools affected would be FES, DMS, and BPHS.
- **Port Aquia Townhomes:** A Preliminary Subdivision Plan was approved in 2002 for 236 townhomes. Ninety seven have been built with no activity since 2008 on the remaining 149. It is located on the west side of Jefferson Davis Highway across from St, William of York Catholic Church. Schools affected would be WWES, SHMS, and BPHS.
- **Sherwood Farm Subdivision:** A Preliminary Subdivision Plan was submitted in July 2005 for 208 SFH. The area was sold to a new developer in 2011 and plans are not known at this time. It is located north of Kings Highway (SR 3) and south east of Forest Lane Road. Schools affected would be FFES, DSMS, and SHS.
- **Staffordshire Subdivision:** A Preliminary Subdivision Plan was submitted in Nov 2004 for 336 SFHs. A Construction Plan for section 2 was submitted in Jun 2008 for 156 SFHs. It is located south of Kellogg Mill Road and west of Abel Reservoir. There has been some land clearing activity, but no construction start activity. Schools affected would be FES, DMS and SHS.

The Base Realignment and Closure (BRAC) may also affect housing development and student membership in Stafford County Public Schools. The local impact of BRAC is currently being studied by various public agencies and commissions, however, the biggest impact was expected in 2011.

Student Membership History and Forecast

Average daily membership (ADM) is determined by dividing the aggregate number of days of membership of all students during a school year by the number of days school is in session. The March 31 ADM is calculated using data from the first day school is in session through the last school day in March.

Table 1. 2006-07 to 2011-12 March 31 Average Daily Membership

| School Year | 2006-07 | 2007-08 | 2008-09 | 2009-10 | 2010-11 | 2011-12 |
|-------------|---------|---------|---------|---------|---------|---------|
| ADM | 26,181 | 26,114 | 26,351 | 26,648 | 26,743 | 26,781 |

Table 2. 2012-13 to 2017-18 Forecasted Average Daily Membership

| School Year | 2012-13 | 2013-14 | 2014-15 | 2015-16 | 2016-17 | 2017-18 |
|-------------|---------|---------|---------|---------|---------|---------|
| ADM | 26,891 | 27,045 | 27,161 | 27,286 | 27,368 | 27,533 |

Forecast Methodology

All forecasts are an extrapolation of the past, involve some level of judgment, and inherently contain a range of error. For these reasons, a consistent methodology along with sound judgment is important when creating and evaluating the forecast.

The forecasting methodology used to predict the number of students who will attend Stafford County Public Schools for the next five years is a combination of the cohort progression method, an average daily membership (ADM) adjustment, and minor housing adjustments. The accuracy of this forecasting method will be analyzed and used to monitor and refine the process in the future.

The cohort progression method involves applying an average growth rate over time to the current year's membership by grade level cohort. The calculation is based on birth data, which is used to forecast kindergarten enrollment and student membership by grade level. An average ratio of the number of kindergarten students compared to the number of live births six years earlier for the previous five to seven school years is applied to the number of live births of Stafford County residents six years prior to the school year being forecasted. Birth data by place of residence is obtained from the Virginia Department of Health, Division of Health Statistics. The K-12 student membership numbers are obtained from the Virginia Department of Education (VDOE) Fall Membership (September 30) report.

The cohort-progression ratio is the number of students in a particular grade divided by the number of students in the previous grade in the previous school year. In other words, it is the rate of students in the cohort being "promoted" to the next grade level. This ratio varies by year and grade level based on families moving in and out of the county, students transferring to different schools within the school division, student retention, and other factors. The cohort-progression ratio incorporates all the different factors affecting student enrollment, retention, and

promotion in one number. *Anticipated transfers for the 2012-13 school year and school choice decisions are not incorporated as they cannot be accurately predicted.*

To develop the membership forecast, cohort-progression ratios are calculated between every pair of consecutive grades for the past seven school years. Mathematical models are then applied to determine the cohort-progression ratio average. That average ratio is applied to the appropriate grade level to project that particular grade forward in time.

The ADM adjustment involves applying an average ADM/fall membership ratio to the grade level forecasts from the cohort-progression method. The ADM/fall membership ratio for each school year is calculated by dividing the average daily membership by the fall membership for the same school year. A five-year average of ADM/fall membership ratios for K-12 is calculated and a three-year average of ADM/fall membership ratios for grades K-5, 6-8, and 9-12 is calculated and adjusted based on the overall five-year average. The average ADM/fall membership ratio is multiplied by the grade level forecast from the cohort-progression method to produce the ADM forecast by grade level.

Table 3. 2012-13 to 2017-18 Average Daily Membership Forecast by Grade Level

| Elementary | K | 1 | 2 | 3 | 4 | 5 | Total |
|-------------------|----------|----------|----------|----------|----------|----------|--------------|
| 2012-13** | 1,888 | 1,894 | 1,795 | 1,993 | 1,973 | 2,036 | 11,579 |
| 2013-14** | 1,940 | 1,969 | 1,904 | 1,854 | 2,030 | 2,048 | 11,745 |
| 2014-15** | 1,887 | 2,023 | 1,979 | 1,966 | 1,888 | 2,107 | 11,849 |
| 2015-16** | 1,892 | 1,966 | 2,033 | 2,042 | 2,002 | 1,959 | 11,894 |
| 2016-17** | 1,862 | 1,972 | 1,975 | 2,097 | 2,079 | 2,077 | 12,062 |
| 2017-18** | 1,860 | 1,940 | 1,980 | 2,038 | 2,134 | 2,156 | 12,109 |

| Middle | 6 | 7 | 8 | Total |
|---------------|----------|----------|----------|--------------|
| 2012-13** | 2,087 | 2,090 | 2,094 | 6,271 |
| 2013-14** | 2,111 | 2,114 | 2,131 | 6,356 |
| 2014-15** | 2,124 | 2,138 | 2,154 | 6,416 |
| 2015-16** | 2,184 | 2,150 | 2,178 | 6,513 |
| 2016-17** | 2,030 | 2,211 | 2,190 | 6,431 |
| 2017-18** | 2,151 | 2,054 | 2,251 | 6,457 |

** 2012-13 to 2017-18 ADM is a forecast

Note: Totals may reflect variances due to rounding

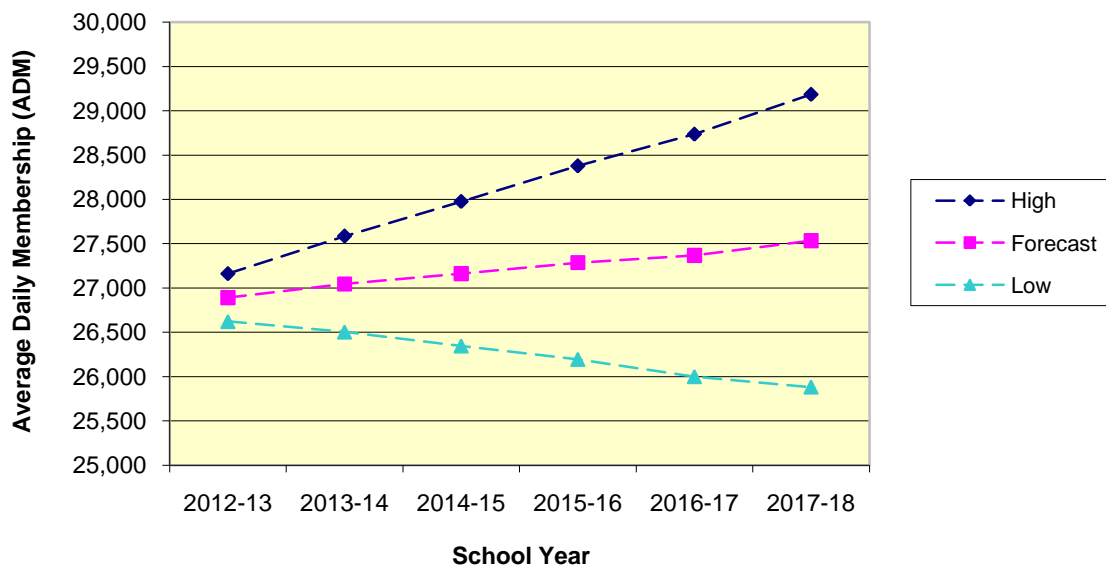
| High | 9 | 10 | 11 | 12 | Total |
|-----------|-------|-------|-------|-------|-------|
| 2012-13** | 2,343 | 2,256 | 2,213 | 2,230 | 9,041 |
| 2013-14** | 2,250 | 2,267 | 2,206 | 2,220 | 8,943 |
| 2014-15** | 2,289 | 2,177 | 2,217 | 2,212 | 8,895 |
| 2015-16** | 2,314 | 2,215 | 2,128 | 2,223 | 8,879 |
| 2016-17** | 2,339 | 2,238 | 2,164 | 2,133 | 8,874 |
| 2017-18** | 2,351 | 2,262 | 2,186 | 2,168 | 8,968 |

** 2012-13 to 2017-18 ADM is a forecast

Note: Totals may reflect variances due to rounding

Fluctuating cohort-progression ratios and ADM/fall membership ratios over several years make accurate forecasting difficult. ADM forecast accuracy is based on the accuracy of the selected ADM/fall membership ratio average and the accuracy of the forecast from the cohort-progression method. If either one, or both, of these factors is out of line the ADM forecasts will also be in error. Forecasts also become less accurate with each subsequent year being forecasted. To portray this, the ADM forecast with range shows the ADM forecast for the following five years with an error range of $\pm 1\%$ the first year and an additional 1% each year thereafter.

Figure 3. 2012-13 to 2017-18 Average Daily Membership Forecast with Range



The forecasted ADM by school and grade level (Table 4) is calculated by first applying the cohort-progression method and ADM/fall membership ratio to each grade level at each school. The forecast is then refined by applying a housing adjustment based on expected housing development.

Table 4. 2012-13 Forecasted Average Daily Membership by School and Grade Level

| <i>Elementary Schools</i> | K | 1 | 2 | 3 | 4 | 5 | 2012-13 Total | 2011-12 ADM |
|---------------------------|----------|----------|----------|----------|----------|----------|----------------------|--------------------|
| Anthony Burns | 123 | 114 | 122 | 137 | 130 | 152 | 777 | 788 |
| Conway | 145 | 152 | 132 | 153 | 161 | 147 | 891 | 870 |
| Falmouth | 73 | 62 | 63 | 73 | 97 | 80 | 448 | 460 |
| Ferry Farm* | 97 | 110 | 92 | 101 | 101 | 95 | 597 | 601 |
| Garrisonville | 85 | 95 | 82 | 85 | 76 | 101 | 525 | 508 |
| Grafton Village | 93 | 80 | 107 | 102 | 101 | 86 | 569 | 590 |
| Hampton Oaks | 127 | 130 | 129 | 132 | 130 | 128 | 776 | 745 |
| Hartwood* | 90 | 86 | 88 | 89 | 88 | 108 | 549 | 535 |
| KW Barrett | 120 | 126 | 118 | 141 | 104 | 128 | 738 | 719 |
| Margaret Brent* | 144 | 143 | 132 | 158 | 136 | 168 | 881 | 856 |
| Moncure | 119 | 124 | 97 | 115 | 126 | 109 | 690 | 700 |
| Park Ridge | 101 | 106 | 98 | 96 | 141 | 113 | 656 | 653 |
| Rockhill | 98 | 95 | 90 | 121 | 95 | 101 | 599 | 591 |
| Rocky Run* | 132 | 132 | 132 | 128 | 134 | 147 | 804 | 779 |
| Stafford | 109 | 100 | 112 | 122 | 104 | 119 | 664 | 639 |
| Widewater | 125 | 137 | 125 | 123 | 122 | 128 | 760 | 708 |
| Winding Creek | 107 | 102 | 78 | 118 | 127 | 126 | 657 | 668 |
| Grade Level Total | 1,888 | 1,894 | 1,795 | 1,993 | 1,973 | 2,036 | 11,579 | 11,410 |

| <i>Middle Schools</i> | 6 | 7 | 8 | 2012-13 Total | 2011-12 ADM |
|-----------------------|----------|----------|----------|----------------------|--------------------|
| Dixon Smith | 288 | 276 | 278 | 842 | 841 |
| Drew | 181 | 162 | 164 | 507 | 470 |
| Gayle | 308 | 301 | 292 | 900 | 899 |
| H.H. Poole | 277 | 293 | 280 | 850 | 859 |
| Rodney Thompson | 362 | 345 | 371 | 1,079 | 1,132 |
| Shirley Heim | 301 | 271 | 246 | 818 | 775 |
| Stafford | 153 | 189 | 180 | 522 | 549 |
| Wright | 217 | 254 | 282 | 753 | 773 |
| Grade Level Total | 2,087 | 2,090 | 2,094 | 6,271 | 6,298 |

Note: Totals may reflect variances due to rounding

| High Schools | 9 | 10 | 11 | 12 | 2012-13 Total | 2011-12 ADM |
|---------------------|----------|-----------|-----------|-----------|----------------------|--------------------|
| Brooke Point | 456 | 434 | 430 | 379 | 1,699 | 1,632 |
| Colonial Forge | 501 | 471 | 493 | 521 | 1,986 | 2,024 |
| Mountain View | 410 | 455 | 426 | 450 | 1,742 | 1,805 |
| North Stafford | 477 | 406 | 398 | 409 | 1,689 | 1,683 |
| Stafford | 499 | 489 | 467 | 472 | 1,926 | 1,929 |
| Grade Level Total | 2,343 | 2,256 | 2,213 | 2,230 | 9,041 | 9,073 |

Note: Totals may reflect variances due to rounding

Principals are asked to review their respective forecasts and to share any input with the planning staff.

Capacity

Each school building has a design capacity based on architectural standards. The actual (program) capacity of any school facility will typically deviate in some degree from this design capacity for any particular school year due to programmatic and other current or proposed utilization factors.

Program capacities are calculated using the Department of Education's (DOE) *School Capacity Worksheets* which are based on the DOE Standards of Quality for classroom usage and portray all classrooms being filled at the designated level for each grade/subject. Classrooms sizes are dependent on the annual enrollment of students and, therefore, will differ from the exact SOQ number designated for each classroom in the calculation.

Table 5. 2012-13 School Design Capacities and Utilization

| <i>Elementary Schools</i> | Design Capacity | Design Capacity Usage % | Program Capacity 2011-12 | Program Capacity Usage % | 2012-13 ADM Forecast |
|---------------------------|------------------------|--------------------------------|---------------------------------|---------------------------------|-----------------------------|
| A Burns | 950 | 82 | 852 | 91 | 777 |
| Conway* | 950 | 94 | 910 | 98 | 891 |
| Falmouth** | 794 | 56 | n/a | n/a | 448 |
| Ferry Farm | 732 | 82 | 649 | 92 | 597 |
| Garrisonville* | 768 | 68 | 586 | 90 | 525 |
| Grafton Village* | 754 | 75 | 677 | 84 | 569 |
| Hampton Oaks | 950 | 82 | 834 | 93 | 776 |
| Hartwood | 649 | 85 | 571 | 96 | 549 |
| Kate Waller Barrett | 950 | 78 | 859 | 86 | 738 |
| Margaret Brent | 950 | 93 | 900 | 98 | 881 |
| Moncure* | 754 | 91 | 773 | 89 | 690 |
| Park Ridge* | 843 | 78 | 707 | 93 | 656 |
| Rockhill* | 843 | 71 | 634 | 94 | 599 |
| Rocky Run | 950 | 85 | 924 | 87 | 804 |
| Stafford*** | 794 | n/a | 687 | n/a | 664 |
| Widewater* | 843 | 90 | 796 | 95 | 760 |
| Winding Creek* | 925 | 71 | 716 | 92 | 657 |
| Elementary Total | 14399 | 80 | 12075 | 96 | 11,579 |

* Schools with Pre-K classes - accounted for in Program Capacity, but are not included in the ADM.

**Falmouth Elementary was closed for renovation during the 2011-12 school year. Students were housed at Stafford Middle School.

*** Stafford Elementary is closed for renovation during the 2012-13 school year. Students will be housed at Stafford Middle School.

| <i>Middle Schools</i> | Design Capacity | Design Capacity Usage % | Program Capacity 2011-12 | Program Capacity Usage % | 2012-13 ADM Forecast |
|-----------------------|------------------------|--------------------------------|---------------------------------|---------------------------------|-----------------------------|
| Dixon-Smith | 1100 | 77 | 964 | 87 | 842 |
| Drew | 650* | 78 | 492* | 103* | 507 |
| Gayle | 1100 | 82 | 938 | 96 | 900 |
| H.H. Poole | 1100 | 77 | 930 | 91 | 850 |
| Rodney Thompson | 1100 | 98 | 1077 | 100 | 1,079 |
| Shirley Heim | 1100 | 74 | 847 | 96 | 818 |
| Stafford** | 1100 | n/a | 818 | n/a | 522 |
| Wright | 920 | 82 | 782 | 96 | 753 |
| Middle Total | 8,170 | 77 | 6,848 | 91 | 6,271 |

*Design capacity reduced by 6 rooms designated for the Empfield Day School. In addition, 6 regular classrooms are used special services (8 students per class versus 25), lowering program capacity.

**2012-13 Renovation of Stafford Elementary – students will be housed at Stafford Middle School. Additional modular classrooms have been added to increase space. Total number of middle and elementary students forecasted is 1,184. Falmouth Elementary was housed during 2011-12.

| <i>High Schools</i> | Design Capacity | Design Capacity Usage % | Program Capacity 2011-12 | Program Capacity Usage % | 2012-13 ADM Forecast |
|---------------------|------------------------|--------------------------------|---------------------------------|---------------------------------|-----------------------------|
| Brooke Point | 1800 | 94 | 2016 | 84 | 1699 |
| Colonial Forge | 1800 | 110 | 2084 | 95 | 1986 |
| Mountain View | 1800 | 97 | 2029 | 86 | 1742 |
| North Stafford | 1925 | 88 | 2233 | 76 | 1689 |
| Stafford* | 1850 | 104 | 1909 | 101 | 1926 |
| High Total | 9125 | 99 | 10271 | 88 | 9041 |

*Two modular classrooms were added in 2011-12. Fifty students added to design and program capacity.

Note: Totals in all tables may reflect variances due to rounding.

Special school division programming, such as specific classes for students with disabilities and classrooms for ESL, physical therapy, etc. can lower or increase the actual program capacity of schools, as these programs often utilize classrooms that are categorized as general education in design capacity calculations. As the number of school division special programs vary among schools, their impact on capacity will also vary among schools and school years with changes to the number and/or locations of these programs.

High school program capacities exceed design capacities in most situations. Program capacity calculations place students in gyms, art & music rooms, career & technology labs, and computer labs throughout the schools. These areas are counted as 0 in design capacity calculations. In addition, the formula also accounts for students on work release programs and students that are transported to programs such as Governors' schools and vocational schools.

School Year 2012-13

School Attendance Area Boundaries

The school attendance area boundaries will not change for the 2012-13 school year.

Feeder Patterns

The following tables list the elementary/middle/high school feeder pattern combinations for the 2012-13 school year. Each middle and high school receives students from three to five elementary or middle schools, respectively (Tables 6 - 9).

Table 6. 2012-13 Elementary to Middle School Feeder Patterns by Elementary School

| Elementary School | Middle School |
|--------------------|---|
| A Burns ES | Stafford MS Thompson MS |
| Conway ES | Dixon-Smith MS Drew MS |
| Falmouth ES | Drew MS Gayle MS |
| Ferry Farm ES | Dixon-Smith MS Drew MS Gayle MS |
| Garrisonville ES | Thompson MS Wright MS |
| Grafton Village ES | Dixon-Smith MS |
| Hampton Oaks ES | Heim MS Poole MS |
| Hartwood ES | Gayle MS |
| KW Barrett ES | Poole MS Wright MS |
| M Brent ES | Drew MS Gayle MS Thompson MS Wright MS |
| Moncure ES | Heim MS Poole MS |
| Park Ridge ES | Poole MS Thompson MS |
| Rockhill ES | Wright MS |
| Rocky Run ES | Drew MS Gayle MS |
| Stafford ES | Stafford MS |
| Widewater ES | Heim MS |
| Winding Creek ES | Poole MS Stafford MS Thompson MS |

Table 7. 2012-13 Elementary to Middle School Feeder Patterns by Middle School

| Middle School | Elementary School |
|----------------|---|
| Dixon-Smith MS | Conway ES Grafton Village ES Ferry Farm ES |
| Drew MS | Conway ES Falmouth ES Ferry Farm ES M Brent ES Rocky Run ES |
| Gayle MS | Falmouth ES Ferry Farm ES Hartwood ES M Brent ES Rocky Run ES |
| Heim MS | Hampton Oaks ES Moncure ES Widewater ES |
| Poole MS | Hampton Oaks ES KW Barrett ES Moncure ES Park Ridge ES Winding Creek ES |
| Thompson MS | A Burns ES Garrisonville ES M Brent ES Park Ridge ES Winding Creek ES |
| Stafford MS | A Burns ES Stafford ES Winding Creek ES |
| Wright MS | Garrisonville ES KW Barrett ES M Brent ES Rockhill ES |

Table 8. 2012-13 Middle to High School Feeder Patterns by Middle School

| Middle School | High School |
|----------------|---|
| Dixon-Smith MS | Stafford HS |
| Drew MS | Brooke Point HS Colonial Forge HS Stafford HS |
| Gayle MS | Colonial Forge HS Mountain View HS Stafford HS |
| Heim MS | Brooke Point HS North Stafford HS |
| Poole MS | Colonial Forge HS North Stafford HS |
| Thompson MS | Brooke Point HS Colonial Forge HS Mountain View HS North Stafford HS |
| Stafford MS | Brooke Point HS Colonial Forge HS |
| Wright MS | Mountain View HS North Stafford HS |

Table 9. 2012-13 Middle to High School Feeder Patterns by High School

| High School | Middle School |
|-------------------|---|
| Brooke Point HS | Drew MS Heim MS Stafford MS Thompson MS |
| Colonial Forge HS | Drew MS Gayle MS Poole MS Thompson MS Stafford MS |
| Mountain View HS | Gayle MS Thompson MS Wright MS |
| North Stafford HS | Heim MS Poole MS Thompson MS Wright MS |
| Stafford HS | Dixon-Smith MS Drew MS Gayle MS |

Special Education Program Placements

Each school currently includes one or more special education programs that require dedicated instructional space. The table located below shows the current programs at each school and the proposed programs for the 2012-13 school year (Table 10).

Table 10. Special Education Low Incident Programs by School

| <i>Elementary Schools</i> | 2011-12 Programs | # Classrooms | Anticipated 2012-13 Programs | # Classrooms |
|---------------------------|--|---------------------|---|---------------------|
| A Burns | Autism | 2 | Autism Preschool (2 yr old from MES) | 2 1 |
| Conway | Autism Preschool | 2 1 | Autism Preschool | 2 1 |
| Falmouth | Learning Support II (@SMS) | 2 | Learning Support II Preschool (Full Day Autism from SES) | 2 1 |
| Ferry Farm | Learning Support I | 2 | Learning Support I | 2 |
| Garrisonville | Autism Preschool | 1 1 | Autism Preschool | 1 1 |
| Grafton Village | Emotional Disability Preschool Preschool (from FAL, 2 yr) | 1 1 1 | Emotional Disability Preschool Preschool (2 yr old) | 1 1 1 |
| Hartwood | Emotional Disability | 1 | Emotional Disability | 1 |
| Hampton Oaks | Emotional Disability | 2 | Emotional Disability | 1 |
| KW Barrett | Autism Learning Support I | 2 2 | Autism Learning Support I | 2 2 |
| M Brent | Learning Support II Multiple Disabilities | 2 1 | Learning Support II Multiple Disabilities | 2 1 |
| Moncure | Emotional Disability Learning Support I Preschool (2 yr old) | 1 2 1 | Emotional Disability Learning Support I | 1 2 |
| Park Ridge | Autism Preschool | 1 1 | Autism Preschool | 2 1 |
| Rockhill | Hearing Impaired/Deaf Preschool | 1 1 | Hearing Impaired/Deaf Preschool | 1 1 |
| Rocky Run | | | | |
| Stafford | Autism Preschool Autism | 1 1 | Autism (@SMS) | 1 |
| Winding Creek | Autism Preschool | 2 1 | Autism Preschool | 2 1 |
| Widewater | Preschool | 1 | Preschool | 1 |

| Middle Schools | 2011-12 Programs | # Classrooms | 2012-13 Programs | # Classrooms |
|-----------------------|-------------------------|---------------------|-------------------------------------|---------------------|
| Drew | Multiple Disabilities | 1 | Multiple Disabilities | 1 |
| | Empfield Day School | 2 | Empfield Day School | 3 |
| | LS II (from SMS) | 1 | Learning Support II | 1 |
| | H/VI Resource | 1 | HI/VI | 1 |
| Dixon-Smith | Autism | 2 | Autism | 2 |
| Gayle | Learning Support I | 2 | Learning Support I | 2 |
| | Emotional Disability | 1 | Emotional Disability | 1 |
| HH Poole | Autism | 2 | Autism | 2 |
| | Learning Support II | 1 | Learning Support II | 1 |
| Heim | Learning Support I | 1 | Learning Support I | 1 |
| Stafford | Emotional Disability | 1 | Emotional Disability | 1 |
| Thompson | Autism | 1 | Autism | 1 |
| | Emotional Disability | 1 | Emotional Disability | 1 |
| Wright | Emotional Disability | 1 | Emotional Disability | 1 |
| | Learning Support I | 1 | Learning Support I | 1 |
| High Schools | 2011-12 Programs | # Classrooms | Anticipated 2012-13 Programs | # Classrooms |
| Brooke Point | Autism | 1 | Autism | 1 |
| | Emotional Disability | 1 | Emotional Disability | 1 |
| | Learning Support I | 2 | Learning Support I | 2 |
| Colonial Forge | Emotional Disability | 1 | Emotional Disability | 1 |
| | Learning Support I | 2 | Learning Support I | 2 |
| | Learning Support II | 1 | Learning Support II | 1 |
| | | | Autism | 1 |
| Mountain View | Autism | 2 | Autism | 2 |
| | Emotional Disability | 1 | Emotional Disability | 1 |
| | Learning Support I | 1 | Learning Support I | 1 |
| | Multiple Disabilities | 1 | Multiple Disabilities | 1 |
| North Stafford | Autism | 1 | Autism | 1 |
| | Emotional Disability | 1 | Emotional Disability | 1 |
| | Learning Support I | 1 | Learning Support I | 2 |
| | Learning Support II | 1 | Learning Support II | 1 |
| Stafford | Autism | 1 | Autism | 1 |
| | Emotional Disability | 1 | Emotional Disability | 1 |
| | Learning Support I | 1 | Learning Support I | 1 |
| | Learning Support II | 1 | Learning Support II | 1 |
| | Day School (ED) | 2 | Day School (ED) | 2 |

All elementary schools also have Learning Disability (LD) services that may utilize additional classroom space. Additionally, elementary schools have Primary Support services that may utilize additional classroom space.

Recommendations

- Continue the annual division wide evaluation of the program capacity for all schools. Program capacity is currently calculated utilizing the Virginia Department of Education's *Virginia Elementary School Capacity Worksheet*, *Virginia Middle School Capacity Worksheet*, and the *Virginia High School Capacity Worksheet* with input from the school administrators. Program capacity will account for instructional programs that are conducted at each school. Design capacity has been evaluated based on floor plans and the *original intent* of each classroom space. Design capacity will remain consistent each year unless construction activity changes the physical design of a school.
- Continue reviewing plans for the use of existing and availability capacity for the accommodation of students from campuses that are undergoing significant renovation in order to accomplish the following two purposes: 1) remove/minimize any necessity to serve students on a campus under construction; and 2) minimize costs associated with temporary relocations of students to facilities and/or locations not already in use as a school facility.
- Review overcrowded schools for possible redistricting in the 2013-14 school year.